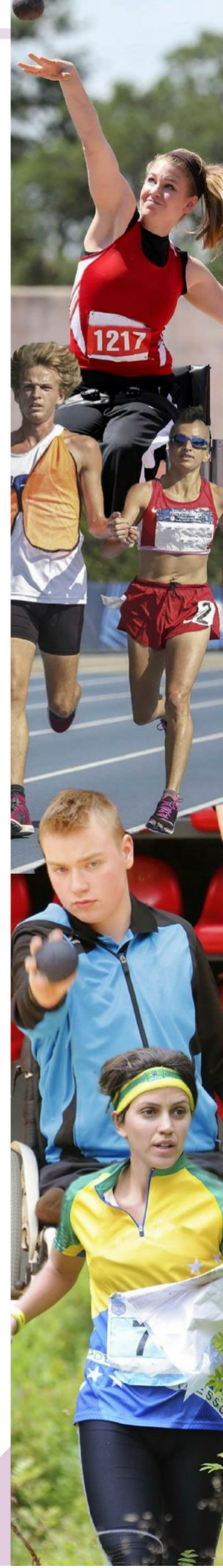




# Bulletin 1

**ISF WORLD SCHOOLS  
INCLUSIVE GAMES  
2019**

**Póvoa de Varzim  
Portugal  
07/07 – 12/07/2019**



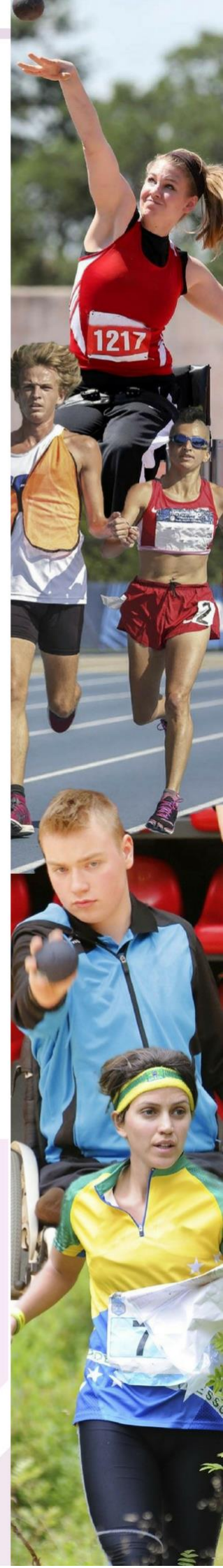
## ISF INCLUSIVE GAMES

---

The ISF Inclusive Games create an opportunity to participate in an international sport event for able-bodied students, students with Special Educational Needs\* and students with disabilities. Together with competing, they live with other students from different countries with whom they promote and enrich the spirit of inclusion. The Games consist of 3 sports combined competition, Athletics, Boccia and Goalball.

The Executive Committee (EC) of the International School Sport Federation (ISF) entrusted the organisation of the 1<sup>st</sup> Inclusive Games to Póvoa de Varzim, Portugal.

\*(students with significant limitations in terms of activity and participation in one or several domains of life, resulting from permanent functional and structural changes, resulting in continuous difficulties in communication, learning, mobility, autonomy, interpersonal relationship and social participation)



## ORGANISATION

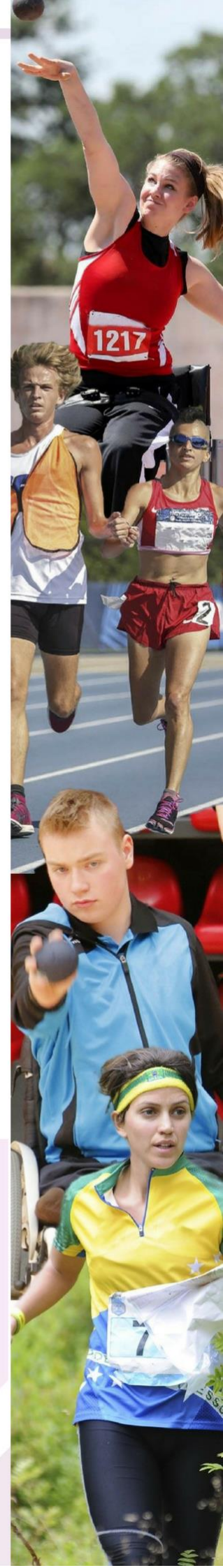
### 1. Management

Organisation	Ministry of Education of Portugal under the aegis of the ISF
Event Manager	Name: Rui Carvalho Email: <a href="mailto:rui.carvalho@dge.mec.pt">rui.carvalho@dge.mec.pt</a> Phone: 0035 1 213 936 804
ISF Delegate	David Azzopardi Email: <a href="mailto:davidazzo@gmail.com">davidazzo@gmail.com</a>
ISF Sport Director	Josip Kosutic Email: <a href="mailto:josip.kosutic@skolski-sport.hr">josip.kosutic@skolski-sport.hr</a>
ISF Sport Manager	Francesco Fiorini Email: <a href="mailto:francesco.fiorini@isfsports.org">francesco.fiorini@isfsports.org</a>
Facebook	<a href="https://www.facebook.com/ISF-Inclusive-Games/">https://www.facebook.com/ISF-Inclusive-Games/</a>
Twitter	<a href="https://twitter.com/isfsports">https://twitter.com/isfsports</a>
Instagram	<a href="https://www.instagram.com/isfsports/">https://www.instagram.com/isfsports/</a>
website	<a href="http://www.isfsports.org/">http://www.isfsports.org/</a>

### 2. Provisional programme

Sunday 07/07	Arrival of delegations Payment of fees – Accreditation Housing of teams
Monday 08/07	Heads of Delegation Meeting Technical and Referees meeting Competition (Athletics) Competition (Boccia) Competition (Goalball) Opening Ceremony
Tuesday 09/07	Competition (Athletics) Competition (Boccia) Competition (Goalball) Demonstration/experimentation Sports
Wednesday 10/07	Cultural day Cultural Festival
Thursday 11/07	Friendship Orienteering Event Social Lunch Closing Ceremony
Friday 12/07	Departure

During the event, a Seminar will be held to discuss inclusion models in school sport and physical education implemented in each country, as well as to present good practices.





The Local Organising Committee invites the participating countries to send one or more representatives to this Seminar.

The Local Organising Committee will bear the costs of full board accommodation during the period of the competition, for one of the participants from each country, who comes exclusively to attend this seminar.

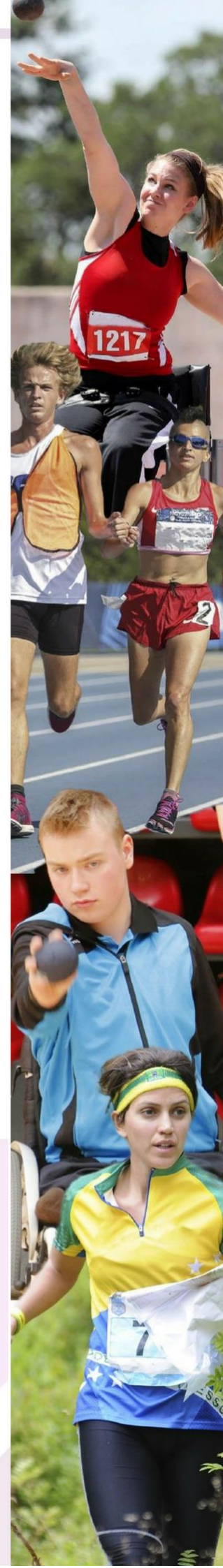
### 3. Travelling and visa

Travel as far as Porto (International Airport Porto – Francisco Sá Carneiro) is to be arranged and financed by each participating country.

When the distance between Póvoa de Varzim and the capital of a participating country on another continent exceeds 5000 kilometres the delegation may extend its stay by arriving one day earlier or leaving one day later at the normal daily fee (50 €).

Delegations must arrive on 7<sup>th</sup> July and depart on 12<sup>th</sup> July after breakfast. The organisation of an extended stay for the delegation (before or after the event) is a matter for the country concerned. It shall not be the responsibility of the Local Organising Committee.

Please check if your country needs visa to enter Portugal.



## TECHNICAL DETAILS

This event aims to create an opportunity for students with Special Educational Needs or Disability, to participate in an international sporting event to compete and living together with other students from different countries promoting the spirit of inclusion.

It consists of a 3 sports combined competition, Athletics, Boccia and Goalball. The countries can participate in one, two or in all sports competitions. There will be a classification for each sport and a combined classification. All events will have a score counting for the event final classification.

### 1. Condition for participation

Category	Gender	Year of birth	Number of athletes per team
Selected	Boys-Girls	2001-2002-2003-2004-2005	Min: 3 - Max: 17

### 2. Composition of the delegation

#### Boccia

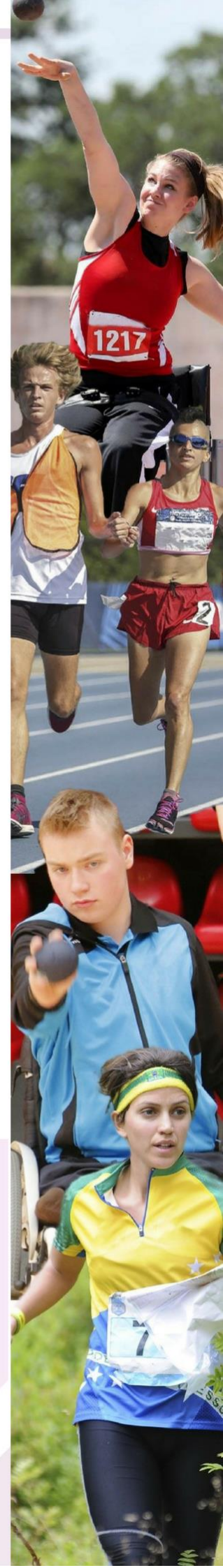
# team	Athletes	Head of delegation	Teacher Coach	Medical Assistant	Assist. adults	TOTAL max
1 team	3-5	1	1	1	1 for each student in wheelchair + 1 for all the other students	9-13

#### Composition of one team

Students in a wheelchair (In this event, the motor disability will be directed only to wheelchair users.) – at least one

Students with special educational needs

Students without special educational needs (maximum 2) – only for Boccia and Goalball competition.



ISF

Goalball						
# team	Athletes	Head of delegation	Teacher Coach	Medical Assistant	Assist. adults	TOTAL max
1 team	3-6	1	1	1	1 for each blind student + 1 for all the other students	8-15

**Composition of one team**

Students with visual impairment – at least one  
 Students without special educational needs (maximum 2) – only for Boccia and Goalball competition.

Athletics						
# team	Athletes	Head of delegation	Teacher Coach	Medical Assistant	Assist. adults	TOTAL max
1 team	6	1	1	1	2 + 1 based on a reasoned request	11-12

**Composition of one team**

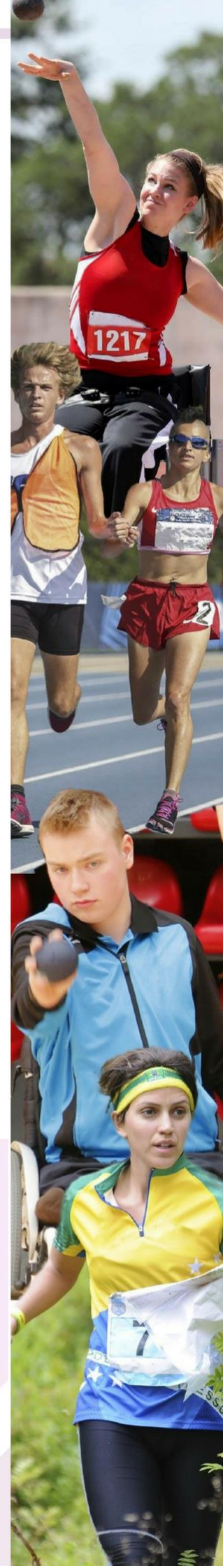
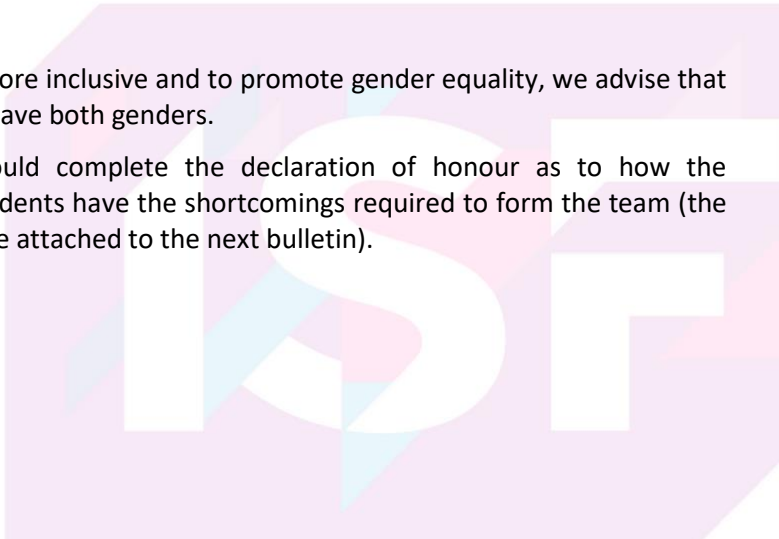
Students with intellectual disabilities

All able-bodied students must be attending schools which provide a general education.

All students with disabilities must be attending school in the country they represent.

In order to be more inclusive and to promote gender equality, we advise that the team must have both genders.

Delegations should complete the declaration of honour as to how the participating students have the shortcomings required to form the team (the document will be attached to the next bulletin).





The following are not eligible to participate:

- pupils of vocational schools who only attend that school as a complement to their vocational training;
- school teams and pupils enrolled at schools which provide sports training without any general education;
- part-time (e.g. afternoon) sports schools which take pupils from a variety of schools for training in one or more sports;
- teams formed as part of clubs, companies, universities or other institutions.

Coach/teacher: the coach is the trainer dedicated to his/her team.

Head of Delegation: he/she may not combine the function of Head of Delegation and coach or another official function. He/she shall be the sole intermediary between his/her delegation and the Organising Committee, the ISF Technical Commission and the ISF Delegate.

Assisting adults:

- Boccia: 1 assisting adults are allowed per student in wheelchair + 1 for all the other students.
- Goalball: 1 assisting adults are allowed per blind student + 1 for all the other students.
- Athletics: 2 assisting adults are allowed + 1 based on a reasoned request.

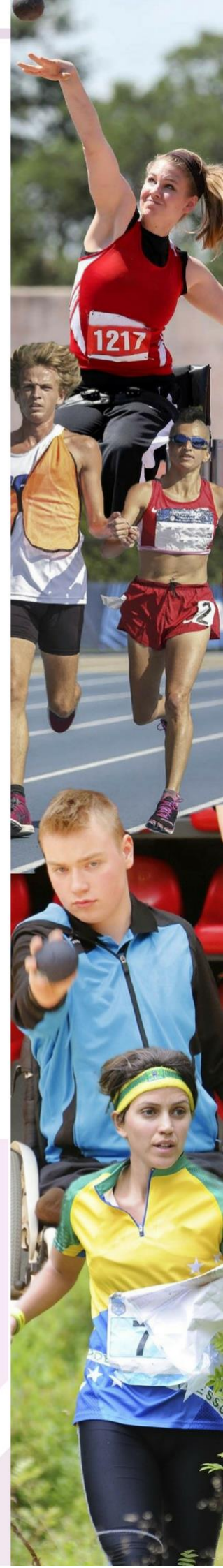
Participants obligations:

- Each participant is required to be present throughout the whole duration of the event.
- Each participant is obliged to take part also in all of the non-sport activities.
- Each team undertakes to compete against all other participating teams.
- Each participant undertakes to compete against all other participants.
- The absence of any member of a participating team from any part of the entire sport programme, opening-, prize-giving- and closing ceremonies and socio-cultural programme may result in the team being excluded from the results.

### 3. Competition venues

The competition will take place at following venues:

Sport	Name	Location
Athletics	Póvoa de Varzim Tracking Field	Póvoa de Varzim
Boccia	Póvoa de Varzim Sports Hall	Póvoa de Varzim
Goalball	Póvoa de Varzim Sports Hall	Póvoa de Varzim
Friendship Orienteering Event	Póvoa de Varzim City Center	Póvoa de Varzim



#### 4. Technical Rules

##### Athletics

For players with intellectual disabilities. Countries must register 2 players (one boy and one girl) in all disciplines.

The competition is composed of shot put (girls – 3kg; boys – 4kg), long jump, sprint (100m).

Minimum mandatory team participation conditions:

- 1) At least 2 players (one boy and one girl) with intellectual disabilities.

All competitions are run by IAAF regulations with approved variations by INAS.

<b>Shot Put (Girls – 3kg Boys – 4 kg)</b>	<b>Long Jump</b>	<b>100 meters</b>
---	------------------	-------------------

##### Boccia

Team competition with a 3 athletes participating (may have 2 additional members), at least one wheelchair user (ramp/hand/foot player) and may have, at least one able-bodied student.

The team must have both genders (one boy or one girl)

Rules of the game set by BISFed will be applied, except for game times and rules applied to players who play standing.

##### Goalball

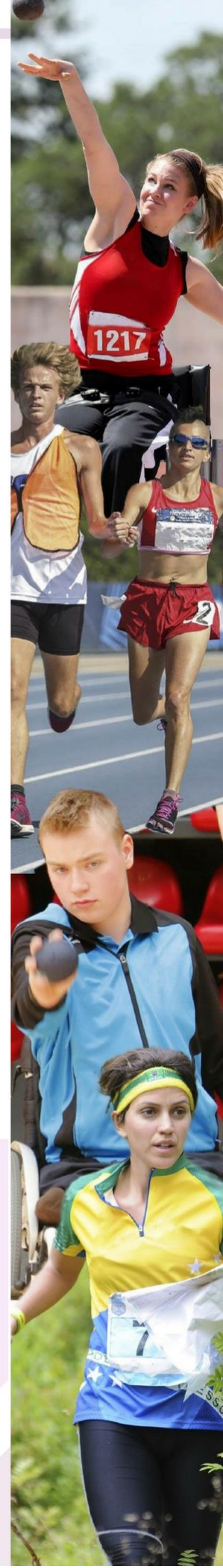
Team competition with 3 athletes participating (may have 3 additional members) at least one with visual impairment. The team must always have both genders on the field (one boy or one girl) and and may have, at least one able-bodied student.

All players must compete with eyeshades.

The detailed rules and regulation will be sent as an [attachment](#) to this Bulletin.

##### Friendship Orienteering Event

All athletes must take part in this event. The Orienteering competition in this event will include a FootO course with uncompetitive character for the whole team, a PreO competition for competitors with reduced mobility, a TempO competition for students without special needs, an Adapted Orienteering competition for the intellectual handicapped and a kind of string course with relief maps for visually handicapped.





FootO is one of the official disciplines of Orienteering. To know more about Orienteering and FootO, please go to <http://orienteering.org/about-orienteering/> and <http://orienteering.org/foot-orienteering/rules/> PreO and TempoO are different course formats of Trail Orienteering. To know more about TrailO and its formats, please go to <http://orienteering.org/wp-content/uploads/2010/12/Competition-Rules-for-IOF-Trail-Orienteering-Events-2016.pdf>

Adapted Orienteering was originally developed from the TrailO, and is intended to be understood as an Orienteering discipline, particularly suitable for specific groups which include intellectual disability. It's not an official IOF discipline and Portugal was pioneer in its development. To know more about Adapted Orienteering, please go to [http://gd4caminhos.com/eventos/circuito/images/stories/circuito/ori\\_adapt\\_ada\\_regulamento.pdf](http://gd4caminhos.com/eventos/circuito/images/stories/circuito/ori_adapt_ada_regulamento.pdf)

### Demonstration/experimentation sports

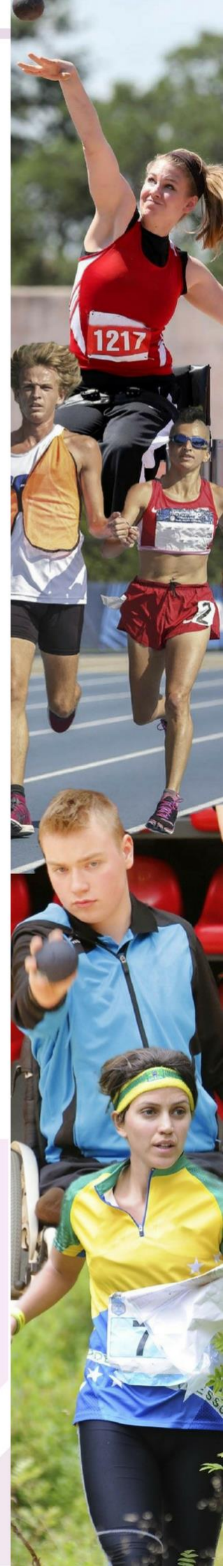
During the event there will be demonstration and try out sports for participating team members. Delegations cannot include further members to participate in these events.

## **5. Doping**

Dope testing (for use of banned substances) can take place during the competition according to current ISF Anti-Doping Rules: <http://isfsports.org/system/files/isf-anti-doping-rules.pdf>

If selected for testing a competitor may be accompanied by an adult.

If a competitor is following a course of medical treatment which includes the use of prohibited substances according to the current WADA prohibited list (2018 version: [https://www.wada-ama.org/sites/default/files/prohibited\\_list\\_2018\\_en.pdf](https://www.wada-ama.org/sites/default/files/prohibited_list_2018_en.pdf)) he or she must obtain from his/her National Anti-Doping Agency (NADO) a TUE (Therapeutic Use Exemption) that complies with the requirements of the International Standard and must inform the organisers immediately upon arrival.



## ADMINISTRATION

### 1. Registration

The registration will be open from 1<sup>st</sup> September 2018. The electronic entry registration form can be accessed [here](#).

Please use your ERAS credentials to access registration. If you need a new username and password, please contact the ISF secretariat [isf@isfsports.org](mailto:isf@isfsports.org).

Phase 2 of registration will only be opened once the deposit payment has been duly received by the ISF.

The final deadline for registration Phase 2 is 31<sup>st</sup> January 2019. After this date the organiser of the event may reject any new entries.

### 2. Fees

#### a) Participation fee

In accordance with the rules laid down by ISF, the payment to be made to the organisers of the event amounts to 50 € per person and per night.

The participation fee (per person/per night) in EURO for all participants is as follows:

Position	Fee	Type of room
Head of delegation	50€	Single room
Coaches/teachers	50€	Double room
Coach/teacher	100€	Single room
Medical Assistant	50€	Double room
Medical Assistant	100€	Single room
Competitors	50€	2-4 bedded room
Assisting adults	50€	Double room
Assisting adult	100€	Single room

The fee covers full board accommodation for the duration of the event.

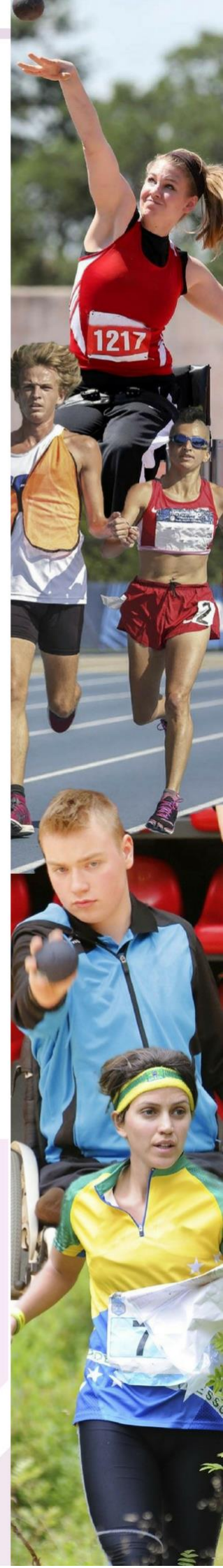
It covers the competition, cultural programme activities and all transport in connection with the official programme (arrival, departure, sports and cultural programmes).

#### b) ISF levy

An additional ISF levy of 40 € per member in the delegation must be paid together with the balance of the participation fee.

#### c) Donation to the School Sport Foundation

The ISF School Sport Foundation intends to provide underprivileged school children with opportunities to access sports training by highly qualified PE teachers and trainers and to dispose of good quality school sport equipment and infrastructure. One of the occasions to help the Foundation is the Charity Gala Dinner in which the Heads of Delegation will be invited. It is suggested





that a heads of delegation will contribute an extra 50 € for taking part in the Charity Gala dinner.

A second way to raise funds for the School Sport Foundation is a free contribution that you can add to the 40 € ISF levy of the participants. You can add 5 €, 10 € or 15 € per participant to the ISF levy to pay. Instead of paying 40 €, you thus pay 45 €, 50 € or 55 € per participant.

d) Total Fee

The total sum per person amounts to

# nights		Participation fee		ISF levy		(Donation School Sport Foundation)	TOTAL (minimum)
5	x	50€	+	40€	+	(5€ or 10€ or 15€)	<b>290€</b>

### 3. Deposit

Along with the entry, each country must pay a deposit of 100 € per person as confirmation of the entry. The deposit must be sent as a single payment for the whole delegation by the organisation responsible for school sport (federation, trust, ministry...).

Payments by individual schools will not be accepted.

The sum of the deposit will be deducted from the total cost of participation.

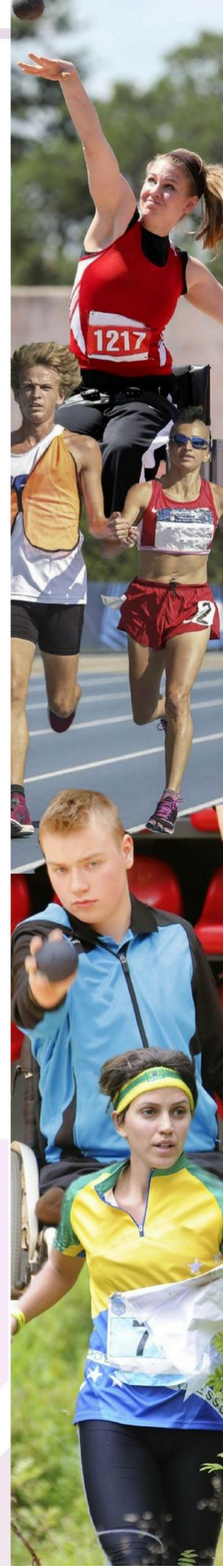
The deposit is non-refundable in the event of non-participation unless the registered country has informed the organisers at least one month before the start of event or in the case of unusual or unforeseen circumstances (force majeure). The latter instance will require the approval of the ISF Management Committee.

If the deposit is not paid before the ISF deadline, the Local Organising Committee has the right to decide if the country is eligible to participate at the event.

If there is no specific agreement between the LOC and the country, the country fails to pay the deposit in due time and cancels its participation within the month prior to the event, it will be charged by the amount of the deposit plus a fee of 20% of the deposit (120 € per person).

The deposit is to be paid to the following account:

Name of bank: Fortis Bank  
 Address : Warandeborg 3, 1000 Brussels, Belgium  
 BIC (Swift Code) : GEBABEBB  
 Payee: ISF, Rue Archimede 59, 1000 Brussels, Belgium  
 IBAN : BE03 0015 2130 7984  
 Reference: ISF Inclusive Games 2019 + *name of participating country*





The balance is to be paid on arrival or in advance by bank transfer. The details will be specified in the next bulletin.

All bank charges (for both deposit and balance) are to be met by the participating countries!

#### 4. Insurance

Each country is required to provide insurance for each member of its delegation. At a minimum the insurance is to cover civil liability, material damage and medical costs.

#### 5. Deadlines

Registration Phase 1 on ERAS opens	01/09/2018
Registration Phase 2 on ERAS & payment of deposit	31/01/2018

**Looking forward to meeting you in Portugal in July 2019**

