



# Bulletin 2

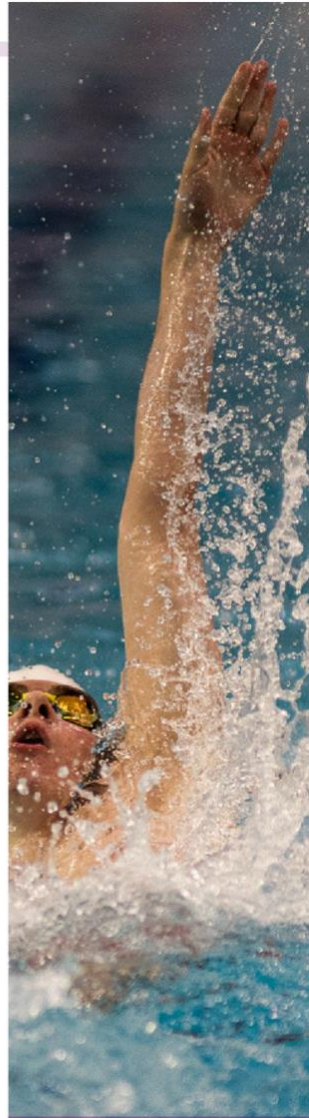
## ISF World Schools Championship Swimming 2019

**Rio de Janeiro  
Brazil  
18/05 – 23/05/2019**

ISF sponsor

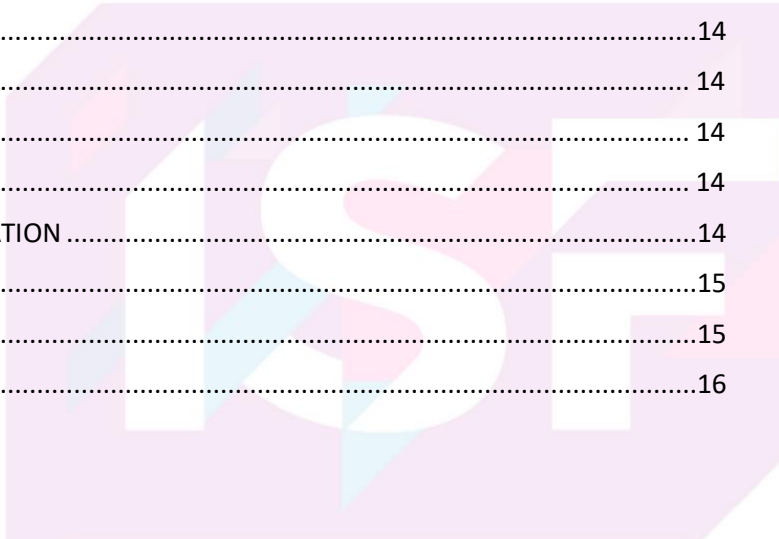
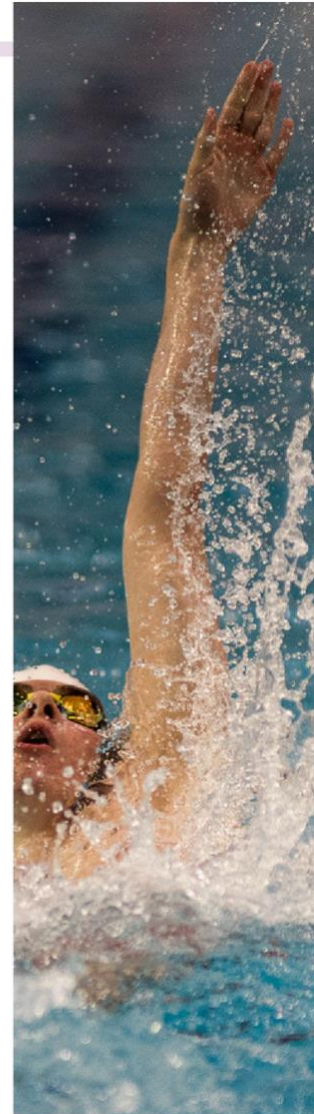


Joy of moving



## Table of Content

ISF WSC Swimming .....	3
THE ORGANISING COMMITTEE .....	3
1. Management .....	3
2. Risk Assessment .....	4
3. Visa Policy .....	4
PARTICIPATION.....	4
1. Condition for participation .....	4
2. Composition of the delegation.....	5
ADMINISTRATION & FINANCE.....	6
1. Registration .....	6
2. Fees.....	6
3. Balance Payment.....	7
4. Insurance .....	7
5. Deadlines .....	8
6. Accreditation Procedure.....	8
LOGISTICS .....	9
1. Arrival & Departure .....	9
2. General Schedule.....	9
3. Transport Network .....	9
4. Accommodation .....	9
NON-SPORT ACTIVITIES.....	10
SPORTS .....	11
1. Technical Details.....	11
2. Competition System .....	12
3. Sport Venue(s).....	12
4. Sport Equipment.....	12
5. Sport Schedule.....	13
6. Results .....	13
7. Sport Info Desk .....	13
MEDICAL.....	14
1. Food & Beverage .....	14
2. Doping Control .....	14
3. Hospitals .....	14
MEDIA AND COMMUNICATION .....	14
GENERAL INFORMATION.....	15
MAP .....	15
ISF sponsor .....	16



## ISF WSC Swimming

The Swimming World Schools Championships was first organised in 1981. In the last edition that took place in 2017 in Budapest, Hungary, 47 teams from 17 ISF members participated.

Year	City	Country
1981	Ankara	Turkey
1997	Antwerp	Belgium
1999	Castres	France
2001	Luxembourg	Luxembourg
2003	Plzen	Czech Republic
2005	Palma De Mallorca	Spain
2007	Szekesfehervar	Hungary
2009	San Juan	Puerto Rico
2011	Gzira	Malta
2013	Herzliya	Israel
2015	Poznan	Poland
2017	Budapest	Hungary

The Executive Committee (EC) of the International School Sport Federation (ISF) entrusted the organisation of the 13<sup>th</sup> Swimming World Schools Championship to Rio de Janeiro, Brazil.

The participants, both girls and boys aged 15-18, can compete in selected or school teams.

## THE ORGANISING COMMITTEE

### 1. Management

#### Overview of Local Organising Committee

Organisation	C.B.D.E. – CONFEDERAÇÃO BRASILEIRA do DESPORTO ESCOLAR
Event Manager	Daniela Sousa <a href="mailto:cbde@cbde.org.br">cbde@cbde.org.br</a> Phone: +55 61 3967-7176

#### Overview of ISF Representatives

ISF Delegate	João Graça <a href="mailto:joao.graca@dge.mec.pt">joao.graca@dge.mec.pt</a>
ISF Technical President	Aleksandra Marjanac <a href="mailto:aleksandramarjanac.isf@gmail.com">aleksandramarjanac.isf@gmail.com</a>
ISF Sports Manager	Francesco Fiorini





	<a href="mailto:francesco.fiorini@isfsports.org">francesco.fiorini@isfsports.org</a>
Facebook	<a href="https://www.facebook.com/isfsports/">https://www.facebook.com/isfsports/</a>
Twitter	<a href="https://twitter.com/isfsports/">https://twitter.com/isfsports/</a>
Instagram	<a href="https://www.instagram.com/isfsports/">https://www.instagram.com/isfsports/</a>
Website	<a href="http://www.isfsports.org/">http://www.isfsports.org/</a>

## 2. Risk Assessment

The LOC informs that the accommodation and competition venue are very close to each other, which facilitates the security of the event. Every single event will be followed by the police and private security.

## 3. Visa Policy

VISA requirements and documents to entreat various Ports of entry (bus, airport) have to be checked by the individual nations. If you encounter any trouble during your journey, you can contact the LOC.

## PARTICIPATION

The delegations from the following ISF Members participating in this event will be:

Boys (21): Belgium Flanders, Brazil, Chile, China, Chinese Taipei, Croatia, Czech Republic, England, France, Germany, Israel, Luxembourg, Nepal, Portugal, Romania, Russia, South Africa, Sri-Lanka, Turkey, United Arab Emirates, United States

Girls (20): Belgium Flanders, Brazil, Chile, China, Chinese Taipei, Croatia, England, France, Germany, Israel, Luxembourg, Nepal, Portugal, Romania, Russia, South Africa, Sri-Lanka, Turkey, United Arab Emirates, United States

### 1. Condition for participation

Sports	Category	Gender	Year of birth	Number of athletes per team
Swimming	School	Boys	2001-2002-2003-2004	6
	School	Girls	2001-2002-2003-2004	6
	Selected	Boys	2001-2002-2003-2004	6
	Selected	Girls	2001-2002-2003-2004	6



A country may enter a maximum of 4 teams (1 school team girls, 1 school team boys, 1 selected team girls and 1 selected team boys).

All students in the school team must have been enrolled at the same school since the beginning of the school year 2018/2019.

All students in the selected team must have been enrolled at a school within the territory of the respective ISF member since the beginning of the school year 2018/2019.

## 2. Composition of the delegation

Sport	Athletes min-max	Head of delegation	Coaches/ Teachers	Add adults
Swimming	6-24	1	1-4	2

All students must be attending schools which provide a general education.

The following are not eligible to participate:

- pupils of vocational schools who only attend that school as a complement to their vocational training;
- school teams and pupils enrolled at schools which provide sports training without any general education;
- part-time (e.g. afternoon) sports schools which take pupils from a variety of schools for training in one or more sports;
- teams formed as part of clubs, companies, universities or other institutions.

Coaches: the coach is the trainer dedicated to his/her team. Participating ISF members are bound to have minimum one and maximum four team officials per delegation.

Head of Delegation: he/she may not combine the function of Head of Delegation and coach or another official function. He/she shall be the sole intermediary between his/her delegation and the Organising Committee, the ISF Technical Commission and the ISF Delegate.

Additional adults: function must be specified: doctor, physiotherapist, interpreter, security personnel, ministry representative, journalist... Any other additional person will not be considered part of the official delegation and will not be accredited by the LOC.

\*Any kind of modification in the delegation composition, (including additional adult numbers), must be discussed with and accepted by the Local Organizing Committee. Any extra additional person not previously accepted by the LOC will not be considered part of the official delegation and will not be accredited.

Participants obligations:

- Each participant is required to be present throughout the whole duration of the event.



- Each participant is obliged to take part also in all of the non-sport activities.
- Each team undertakes to compete against all other participating teams.
- Each participant undertakes to compete against all other participants.
- The absence of any member of a participating team from any part of the entire sport programme, opening-, prize-giving- and closing ceremonies and socio-cultural programme may result in the team being excluded from the results.

## ADMINISTRATION & FINANCE

### 1. Registration

Please use your ERAS credentials to access registration. If you need a new username and password, please contact the ISF secretariat [isf@isfsports.org](mailto:isf@isfsports.org).

The final deadline for registration Phase 2 is **05 May**. After this date the organiser of the event may reject any new entries.

Eras Registration Phase 3 deadline is on **10 May**

### 2. Fees

#### a) Participation fee

In accordance with the rules laid down by ISF, the payment to be made to the organisers of the event amounts to 50 € per person and per night.

The participation fee (per person/per night) in EURO for all participants is as follows:

Position	Fee	Type of room
Head of Delegation	50€	Single occupancy
Coaches/Teachers	50€	Double occupancy
Coach/Teacher	100€	Single occupancy
Competitors	50€	2-4 bedded room
Additional adults	50€	Double occupancy
Additional adult	100€	Single occupancy

The fee covers full board accommodation for the duration of the event. It covers the competition, cultural programme activities and all transport in connection with the official programme (arrival, departure, sports and cultural programmes).

#### b) ISF levy

An additional ISF levy of 40 € per member in the delegation must be paid together with the balance of the participation fee.





c) Donation to the School Sport Foundation

The ISF School Sport Foundation intends to provide underprivileged school children with opportunities to access sports training by highly qualified PE teachers and trainers and to dispose of good quality school sport equipment and infrastructure. One of the occasions to help the Foundation is the Charity Gala Dinner in which the Heads of Delegation will be invited. An extra contribution of 50 € for taking part is requested.

A second way to raise funds for the School Sport Foundation is a free contribution that you can add to the 40 € ISF levy of the participants. You can add 5 €, 10 € or 15 € per participant to the ISF levy to pay. Instead of paying 40 €, you thus pay 45 €, 50 € or 55 € per participant.

d) Total Fee

The total sum per person amounts to

# nights		Participation fee		ISF levy		(Donation School Sport Foundation)	TOTAL (minimum)
5	x	50€	+	40€	+	(5€ or 10€ or 15€)	290€

### 3. Balance Payment

The balance Payment can be transferred to this bank account:

Name of bank: Banco do Brasil Address : SCN QD. 02 – Terreo Liberty Mall BIC (Swift Code) : BRASBRJBSA Payee: CONFEDERAÇÃO BRASILEIRA DO DESPORTO ESCOLAR IBAN: 001045290000378135 Reference: registration fee WSC Swimming + name participating country
---

\* The balance is to be paid on arrival or in advance by bank transfer.

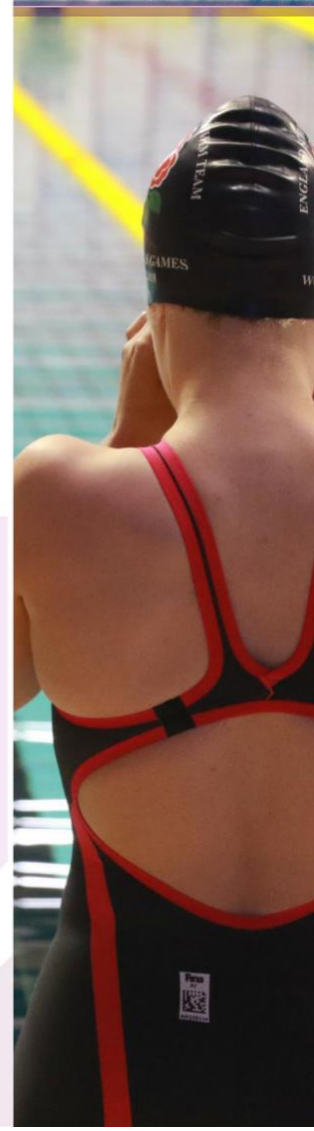
\* Info about deposit. If deposit has been paid then the deposit must be deducted from the total final payment

\* All bank charges (for both deposit and balance) are to be met by the participating countries.

\*All payments must come in one single transfer by the legitimate school sport entity. Only one proof of payment shall be issued.

### 4. Insurance

Each country is required to provide insurance for each member of its delegation. At a minimum the insurance is to cover civil liability, material damage and medical costs.



## 5. Deadlines

- Registration Phase 1: **closed**
- The final deadline for registration Phase 2 is **05 May**
- Registration phase 3: **10 may**

## 6. Accreditation Procedure

Accreditation will take place all day on 17.05.2019. and 18.05.2019 in the Hotel VENIT on the arrival day of delegations.

Heads of Delegation are responsible for undergoing accreditation for their delegation.

The Control Commission composed of representatives of the ISF Technical Commission Swimming and representatives of the Local Organizing Committee will proceed to check the following documents:

1. Finances: proof of payment of the balance including any bank charges and if not sent to the LOC before, the payment overview. To help the Local Organizing Committee to process your payment correctly please complete the form 'payment overview' in attachment and send it to the LOC by e-mail when you pay the balance.

### 2. Accreditation

For the delegation:

- a) the School Certificate official form signed by the Headmaster of the school and the legal School Sport Entity, confirming that all players are full time students at the school, since the beginning of the school year.
- b) the document certifying that the delegation is covered by an insurance that at least covers civil liability, material damage and medical costs.

For every student:

- a) the passport (or identity card) bearing family name, first name, photograph, nationality and date of birth
- b) the anti-doping consent form (download from ERAS)
- c) the use of image consent form (download from ERAS)

When checking is finished the Head of delegation will receive the accreditation cards and welcome packages for each participant in his/her delegation. Participants must carry the accreditation card with them all the time to have access to transport, competition, activities and meals.



ISF



## LOGISTICS

### 1. Arrival & Departure

Delegations will be welcomed at the terminal of the airports Galeão or Santos Dumont Airport with the signs of the ISF LOGO:



Transportation will be provided until the accreditation centre, situated in the VENIT hotel. If you encounter any trouble during your journey, you can contact Robson Aguiar +5561991355845.

### 2. General Schedule

18th May	Arrival of delegations Payment of fees – Accreditation
19th May	Meeting of the Heads of Delegation – Technical meeting Opening Ceremony Training
20th May	Competition (heats and finals) Gala Dinner
21st May	Competition (heats and finals) Cultural Festival
22nd May	Friendship Relay Cultural programme Closing ceremony – Prize-giving (medals and trophies)
23rd May	Departure

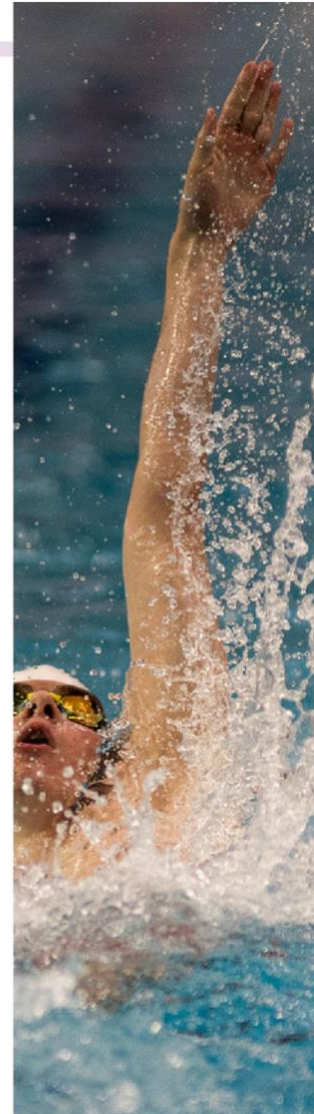
### 3. Transport Network

The Local organizing committee will provide transportation from the airport to the hotel, to the competition venue and to the airport for departure.

### 4. Accommodation

Delegations will be accommodated in the **Venit Hotel** and **Marriott Rio**. Both hotels are very close to the competition venue.

Parents/spectators: the Local Organizing Committee can try to arrange special rates for parents and spectators under demand.



## NON-SPORT ACTIVITIES

---

### Opening Ceremony:

The opening ceremony will take place on 19 May within the *Maria Lenk Aquatic Center* sport venue.

### Cultural Programme

The Local Organizing Committee will organize a cultural visit of Rio city on 21 May for all participants.

### Gala dinner

The ISF Executive Committee in Rome, Italy on 28th October 2014 approved the creation of the ISF School Sport Foundation

<http://www.schoolsportfoundation.org/>

One of the occasions to fundraise for this foundation is the Charity Gala Dinner that will be organised during the ISF World Schools Championship. Heads of Delegation will be invited to participate in the **Charity Gala Dinner** and will be asked to pay a **contribution of 50 EUR** in order to take part. The Organising Committee will then transfer this collected money into the Foundation's account.

The Gala dinner will take place on 20 May, 2019 at 20.00 at a restaurant. The Local Organizing Committee will provide transportation. The dress code is formal.

### "Nation's Night

Delegations are to take part in an activity named "Nations Night" organised with the aim of encouraging exchanges between the different cultures of participating countries.

The participants are invited to introduce and to promote their countries and their culture in an original way. Each delegation is to organise a stand that promotes their country's specialties in terms of art crafts, visual materials, food, drinks (no alcohol), pins, leaflet, etc.

In addition, each delegation shall introduce a facet of its country's culture on stage (with dance, songs, sketches, video, etc.) – maximum 4 minutes. The videos, music, CD USB sticks should be handed to the LOC during accreditation.

### Closing Ceremony:

The Closing Ceremony will take place on the 22 May in the *Maria Lenk Aquatic Center* sport venue. During the closing ceremony the ISF Joy of Moving Trophy for Fair-play will be awarded to one delegation; this award will be voted on by each Head of Delegation. More information on this trophy will be provided during the Head of Delegation meeting.



ISF

# SPORTS

---

## 1. Technical Details

### General Rules:

The ISF Technical Commission for swimming and the Local Organising Committee will be responsible for the running and control of the World Schools Championship.

The World Schools Championship is organised according to ISF rules and to current FINA rules. The rules of play will adhere to the ISF Swimming Rules which can be found [at this link](#).

The Organising Committee will nominate a Control Commission, a Disciplinary Commission and an Appeal Jury.

### Event Disciplinary Commission:

In accordance with the ISF General Competition Rules, the Disciplinary Commission will be composed of:

- the ISF Delegate
- the President of the ISF Swimming Technical Commission
- the President of the Local Organising Committee

The Disciplinary Commission will deal with all matters relating to discipline arising during the championship matches and also during the period of the Championship where the matters are not covered by technical regulations.

Issues related to discipline that cannot be solved by the Event Disciplinary Commission on the spot will be passed on to the Permanent ISF Disciplinary Commission.

It should be noted that where there is a sufficiently serious lack of respect for ISF rules the Disciplinary Commission can disqualify participants, teams or delegations from the competition and to require them to return home before the conclusion of the event.

### Appeal Jury

In accordance with the ISF General Competition Rules, the Appeal Jury will be composed of:

- A representative of the ISF Swimming Technical Commission
- an appointed member of the Local Organising Committee
- the Head Referee.

The Appeal Jury will decide on all appeals concerning the results of the competition in the light of the rules of FINA and the rules of the ISF Technical Swimming. The Appeal Jury will not pronounce on disciplinary matters. Appeal Jury decisions are final and may not be appealed.





### Appeals

Appeals against results or any other appeal not concerning disciplinary matters will be heard by the Appeal Jury. The appeal must be lodged within 30 minutes of the incident and be in writing in English.

The sum of 50 EUR must accompany the appeal. This sum will be refunded only if the appeal is upheld or at the discretion of the Appeal Jury. If not, the sum will be donated to the School Sport Foundation.

## 2. Competition System

The competition will be run according to ISF rules for swimming.

The starting list will be provided upon arrival and list the registration times

The teams finishing first, second and third in the overall Swim Cup competition will be awarded with trophies.

## 3. Sport Venue(s)

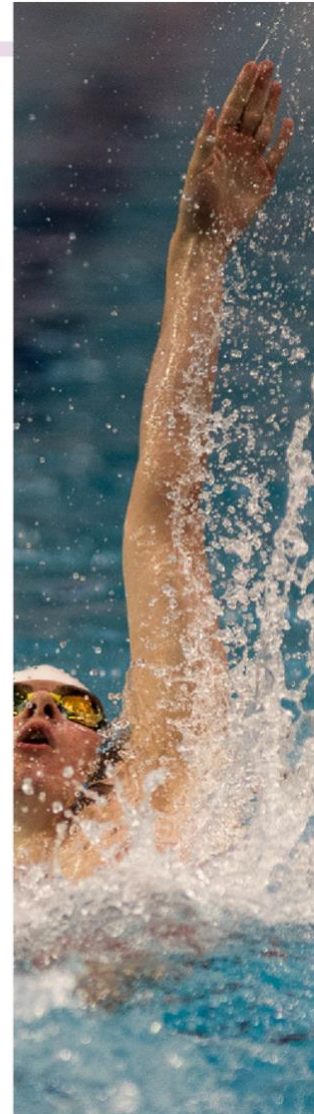
The competition will take place in following venue(s):

Name	Location
Maria Lenk Aquatic Center	Av. Embaixador Abelardo Bueno – Barra da Tijuca

- Location and transportation: The swimming pool is located at a maximum of 800 meters from the accommodation. Transportation by bus will be provided for every team from the hotels to the venue and back.
- Training areas and times
  - Official training session for teams will be according to official program.
  - Extra training opportunities are to be discussed with the Local Organizing Committee.

## 4. Sport Equipment

The LOC will provide the best infrastructure for the WSC, personal gear is to be brought by participants.



# ISF

## 5. Sport Schedule

### Day 1

#### **School Teams**

##### *Heats and Finals*

100m freestyle  
50m Breaststroke  
100m Backstroke  
50m Butterfly  
6 x 50m freestyle relay

#### **Selected Teams**

##### *Heats and Finals*

100m Backstroke  
200m Medley  
50m Butterfly  
100m Breaststroke  
4 x 100m freestyle relay

### Day 2

#### **School Teams**

##### *Heats and Finals*

100m Butterfly  
50m Backstroke  
200m Freestyle  
50m Freestyle  
100m Breaststroke  
4 x 50m Medley Relay

#### **Selected Teams**

##### *Heats and Finals*

100m Freestyle  
100m Butterfly  
50m Backstroke  
50m Breaststroke  
50m Freestyle  
4 x 100m Medley Relay

19th May	Meeting of the Heads of Delegation – Technical meeting Opening Ceremony Training
20th May	Competition (heats and finals) Gala Dinner
21st May	Competition (heats and finals) Cultural Festival
22nd May	Friendship Relay Cultural programme Closing ceremony – Prize-giving (medals and trophies)

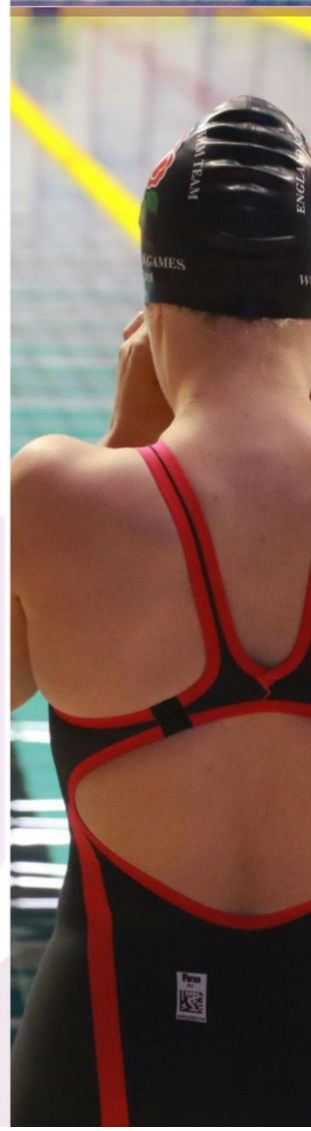
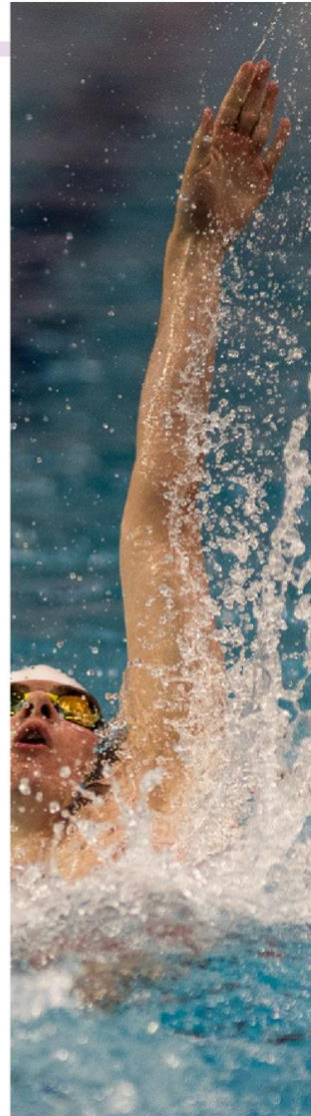
## 6. Results

All results of the day, as well as final schedule for the following day will be published at the end of every day in the following locations:

- On the event website
- Facebook page
- Within the lobby of the hotel at Sport Info Desk

## 7. Sport Info Desk

- There will be a Sport Info Desk within the lobby of both hotels. The info point will be open from 08.00 – 21.00.



# ISF

## MEDICAL

---

### 1. Food & Beverage

Food will be supplied by the hotels and will be served at the hotel dining halls.

The food menu will be based on the necessary nutriments for athletes. Accredited persons will receive 3 meals per day:

- Breakfast
- Lunch
- Dinner

Tap water is not suitable to drink, each team will receive bottled water for entire period of the competition.

The LOC will accommodate specific diet and food restrictions, which will be specified following Phase 3 registration for participants.

### 2. Doping Control

Dope testing (for use of banned substances) can take place during the competition according to current ISF Anti-Doping Rules:

[http://isfsports.org/sites/default/files/isf-anti-doping-rules\\_0.pdf](http://isfsports.org/sites/default/files/isf-anti-doping-rules_0.pdf)

If selected for testing a competitor may be accompanied by an adult. If a competitor is following a course of medical treatment which includes the use of prohibited substances according to the current WADA prohibited list (2019 version: [https://www.wada-ama.org/sites/default/files/wada\\_2019\\_english\\_prohibited\\_list.pdf](https://www.wada-ama.org/sites/default/files/wada_2019_english_prohibited_list.pdf))

He or she must obtain from his/her National Anti-Doping Agency (NADO) a TUE (Therapeutic Use Exemption) that complies with the requirements of the International Standard and must inform the organisers immediately upon arrival.

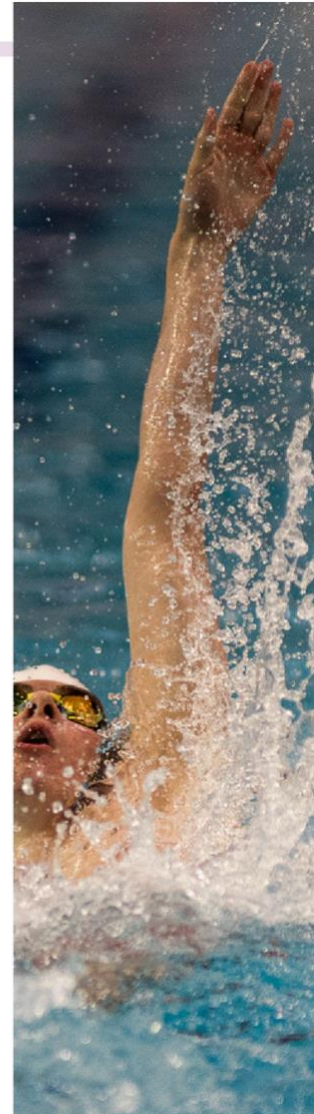
### 3. Hospitals

The Local Organizing Committee will provide an ambulance at the competition venue and hotel during the period of competition for any urgent medical care.

## MEDIA AND COMMUNICATION

---

Broadcasting will be done by the LOC for the following events:  
The competition will be broadcasted live, the schedule will be confirmed prior to the event on the ISF website.





## Social media guidelines

### Spread the word on ISF Swimming World Schools Championship!



We would love for you to help us support the young athletes participating at ISF events.

- Follow the official Facebook page:
- [www.facebook.com/ISFWSCswimcup](http://www.facebook.com/ISFWSCswimcup)
- Use the official ISF hashtags: #ISFWSC2019
- Follow news on ISF's website: [www.isfsports.org](http://www.isfsports.org)
- Submit content related to your event to ISF community manager: [fonda.polona@gmail.com](mailto:fonda.polona@gmail.com)
- Share ISF content on your national federation's profiles

### ISF global channels:

Twitter: [@isfsports](https://twitter.com/isfsports) | #ISFWSC2019

Facebook: [@isfsports](https://www.facebook.com/isfsports) | [facebook.com/isfsports](https://www.facebook.com/isfsports)

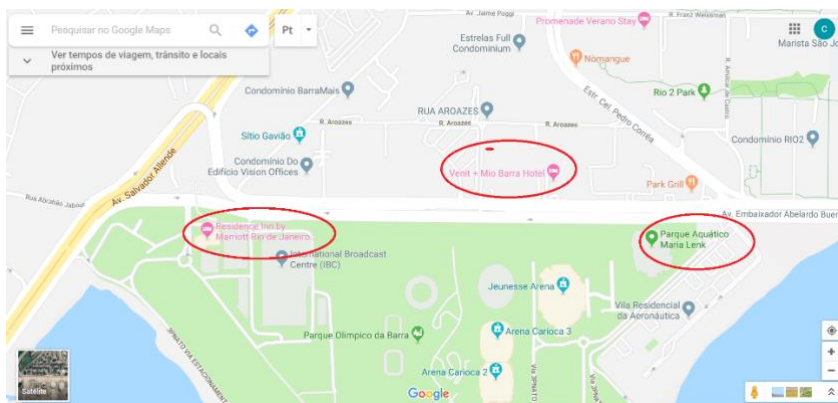
Instagram: [@isfsports](https://www.instagram.com/isfsports) | #ISFWSC2019

## GENERAL INFORMATION

Listed are relevant information regarding Rio de Janeiro:

- Language: Portuguese
- Currency: Brazilian Real
- Temperature: 19° - 15° Celsius
- Electrical socket: The electric socket used is the Brazilian 220 watts
- Tap water is not drinkable

## MAP



Looking forward to meeting you in  
Brazil in May 2019 !

ISF sponsor



Joy of moving

