



ISF WORLD SCHOOL TAEKWONDO CHAMPIONSHIP 2023

Bulletin 1

MAZATLÁN, MEXICO
June 26 - 3 July 2023



ABOUT **ISF** TAEKWONDO

INTRODUCTION

International School Sport Cups (ISC) are competitions designed to explore innovative competition formats which create their own path through the field of school sports events. They are a gateway for new sports or new age categories entering the ISF sports system. This type of event also allows the ISF to establish solid cooperation with international sports federations (IFs) and other sports institutions linked to new sports. These events establish new pathways to high-end international championships, with the goal of aligning events on global levels. Similarly, to the WSCs, ISCs are open to school teams; however, these events shall be designed to give even more schools and selected teams and individuals the opportunity to take part.

ISF TAEKWONDO EVENTS

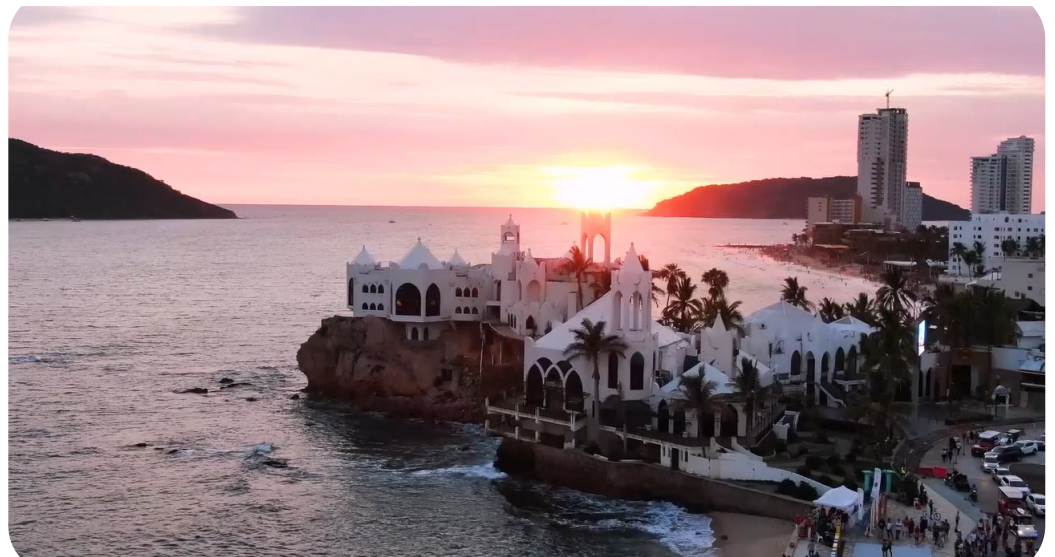
1	2017	Agra/India	Combat Games
2	2018	Marrakech /Morocco	Gymnasiade
3	2019	Budapest/Hungary	Combat Games
4	2021	Belgrade/Serbia	U15 World School Sport Games
5	2022	Normandy/France	France



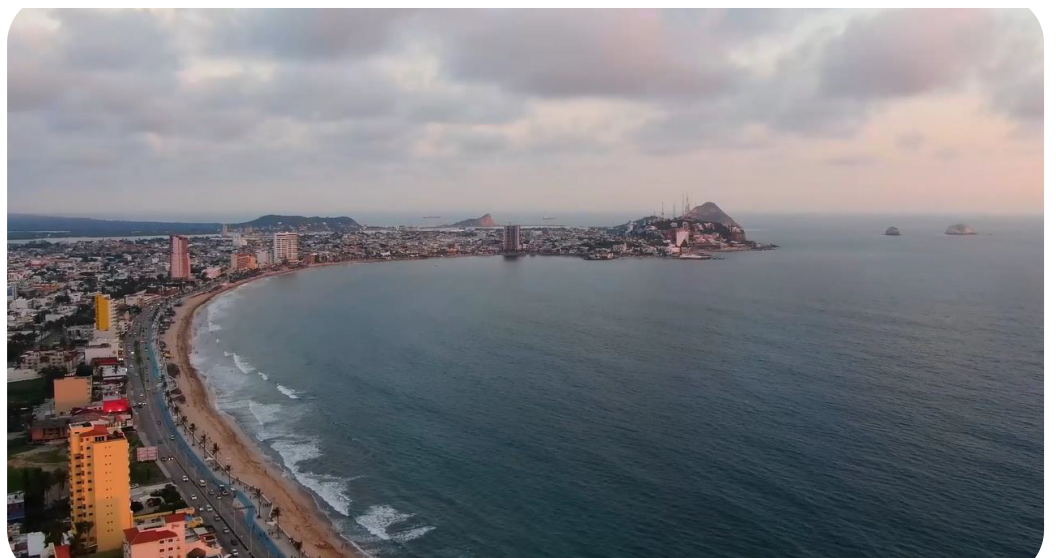
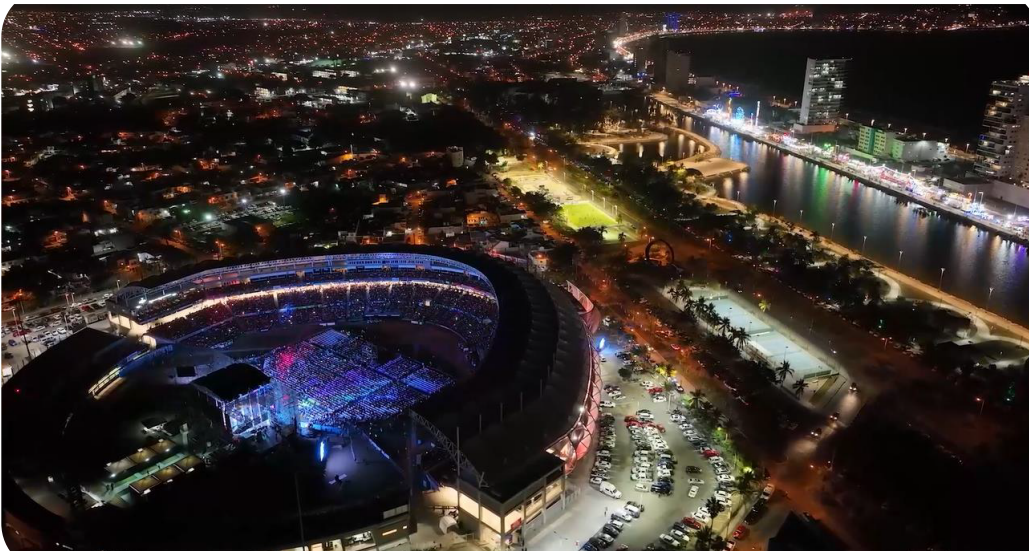


ABOUT MAZATLÁN, MEXICO

Located in the Mexican state of Sinaloa. The city of Mazatlán serves as the municipal seat for the surrounding municipio, known as the Mazatlán Municipality, and is the second largest city in the state, with a population of 438,434.



Mazatlán is a major sporting centre of Mexico, with important sporting activities such as the marathons and triathlons, in which not only local but also foreign athletes participate in. Other sports which are very much popular in the city, are baseball, basketball, and football, with modern sporting venues hosting professional sports teams in each.



ACCOMMODATION



EL CID CASTILLA BEACH HOTEL

Av Camarón Sábalo 6294, Golden Zone,
Mazatlán, Sinaloa
Direct Telephone: +52 669 989-69-69

The continuous views of the Pacific Ocean and its location so close to the famous Golden Zone of Mazatlan, make the El Cid Castilla Hotel de Playa the perfect place for fun. Experience the thrill of watching Mazatlan's famous cliff divers, or create your own thrilling moments by taking a tour, going fishing, and of course playing our world-class golf courses.

<https://www.elcid.com/el-cid-castilla-resort-mazatlan>

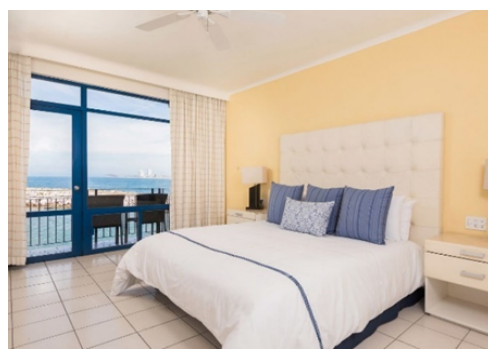


EL CID MARINA BEACH HOTEL AND YACHT CLUB

1705 Avenida Camarón Sábalo Mazatlán,
Sinaloa, Mazatlán, Sinaloa
Direct Telephone: +52 (669) 989-69-69

Let tranquility approach in a relaxing stay at El Cid Marina Beach Hotel and Yacht Club located in the most prestigious marina in Mazatlan. Surrounded by the Pacific Ocean and the most spectacular sunsets, this all-inclusive resort is the perfect getaway for a family vacation.

<https://www.elcid.com/el-cid-marina-beach-mazatlan>



Management

International School Sport Federation (ISF)
Office - admin@isfsports.org
Sport department - sport@isfsports.org

Local Organising Committee
Organisation - Federación Mexicana de Deporte escolar
Contact Person - femedees@gmail.com

Provisional programme

25 June 2023 Monday	26 June 2023 Monday	27 June 2023 Tuesday	28 June 2023 Wednesday	29 June 2023 Thursday
Arrival of delegations exceeding 5000 km Accreditation of delegations exceeding 5000 km	Arrivals Accreditation	Meeting of HoD/Coaches Training Opening Ceremony	Competition	Competition
30 June 2023 Friday	1 July 2023 Saturday	2 July 2023 Sunday	3 July 2023 Monday	4 July 2023 Tuesday
Educational & Cultural Day	Competition	Competition	Departure of delegations	Departure of delegation (exceeds 5000 kilometres – optional)

Please note, that the official program may be subject to change. Any relevant changes will be communicated to the registered delegations prior to the event.

Travelling and Visa

PORTS OF ENTRY

The official port of entry:

- **Mazatlán International Airport**

TRAVEL

Travel to the official ports of entry is to be arranged and financed by each participating delegation.

Delegations are to arrive **on June 26, 2023**, and depart on **July 3, 2023**, after breakfast. The organization of an extended stay for the delegation (before or after the event) is a matter of the delegation concerned. It shall not be the responsibility of the Local Organising Committee.

When the distance between the host city and the capital of a participating delegation on another continent exceeds 5000km, the delegation may extend its stay by arriving one day earlier June 26, 2023, and/or leaving one day later July 4, 2023, at the standard daily fee.

Transportation to and from the port of entry, and all event and activity venues will be organised for all delegations by the LOC.

VISA

Each participating delegation is required to check whether a visa is needed to enter Mexico. Please contact the related Embassy or Consulate to consult the visa application procedure. For any request for invitation letters or any queries over VISA, please contact femedeesmexico@gmail.com

INSURANCE

Each participating delegation is required to provide insurance for each member of its delegation. At a minimum, the insurance is to cover civil liability, material damage, and medical costs.

MEASURES RELATED TO COVID-19

The Local Organising Committee will carry out relevant work against COVID-19 in accordance with the joint prevention and control policies of the National Health Commission.

All current information regarding access to Morocco can be found on the official website of the Mexico Ministry of Foreign Affairs:

Sport Specifics

Sport Program

Taekwondo



Event format
**Individual, Mixed
Gender Pair and Teams
Competition**

Age Categories
**U12
U18**

Team format
Selected teams

Gender Category

Boys / Girls

Event format

Individual, Mixed Gender Pair, and Teams Competition

Age category

U12: students born in 2011-2012-2013

U18: students born in 2005-2006-2007

Team format

Selected team: a team formed by student-athletes that can be enrolled in different schools in the same country which they represent

Maximum team per delegation

1 team

Participation

This event is open to the participation of:

- **ISF members:** Schools and Sports Entities recognized as such by the General Assembly and in order with their rights and obligations
- **Non-ISF members:** the highest institution responsible for school sport recognized by the government of a country that is not a member of ISF
- **Directly applying schools (DAS):** Directly applying schools can either be:
 - A school not affiliated with an ISF member;
 - A school affiliated with an ISF member but not registering through this ISF member.

Composition of the delegation

	Discipline	Belt	Athletes (Max)	Coaches (Max)	Additional Adults
1	Kyorugi	Black	U12 - 40 U18 - 40	6	
		Colour	U12 - No Max U18 - No Max	1 coach per 6 athletes	
2	Poomsae	Black	U12 - 12 U18 - 12	4	
		Colour	U12 - No Max U18 - No Max	1 coach per 6 athletes	
3	Freestyle	Black	U12 - 12 U18 - 12	4	
See Page 17					
4 (a)	Para Taekwondo Kyorugi		U12 - 8 U18 - 8	2	
4 (b)	Para Taekwondo Poomsae		U12 - 4 U18 - 4	2	

1. KYORUGI

Boys 1. Individual <ul style="list-style-type: none"> ◦ Black Belts ◦ Coloured Belts 	Girls 1. Individual <ul style="list-style-type: none"> ◦ Black Belts ◦ Coloured Belts 	Age Category: U12 2011 - 2012 - 2013 U18 2005 - 2006 - 2007
---	--	--

To be eligible to participate:

Each athlete must own a colour belt or any poom/dan certificate allowing them to compete, in one weight category.

Athletes competing in Kyorugi cannot compete in Freestyle or Poomsae and vice-versa. Kyorugi participants will be divided into **two (2) divisions** within their age category: **Black Belts & Colour belts (Yellow, Green & Blue, Brown & Red).**

Delegations are composed of:

	U12	U18
Kyorugi Black Belt	Boys: 20 Maximum Girls: 20 Maximum	Boys: 20 Maximum Girls: 20 Maximum
Kyorugi Coloured Belt	Boys: No Maximum Girls: No Maximum	Boys: No Maximum Girls: No Maximum
Coaches	1 to 6 athletes = 1 coach 7 to 13 athletes = 2 coaches 14 to 20 athletes = 3 coaches 21 to 27 athletes = 4 coaches 28 to 34 athletes = 5 coaches 35 to 40 athletes = 6 coaches 1 coach per 6 athletes	1 to 6 athletes = 1 coach 7 to 13 athletes = 2 coaches 14 to 20 athletes = 3 coaches 21 to 27 athletes = 4 coaches 28 to 34 athletes = 5 coaches 35 to 40 athletes = 6 coaches 1 coach per 6 athletes

Referees (see page 16)

Referees must be qualified in Kyorugi.

*Failure to provide the required number of referees will lead to a fine of 900 Euros, to be paid to the organiser.

WEIGHT CATEGORIES

U12 2011 - 2012 - 2013

BLACK BELT Participants	COLOURED BELT Participants	BOYS & GIRLS
1-2 boys 1-2 girls	No Maximum	-27kgs
1-2 boys 1-2 girls	No Maximum	-30kgs
1-2 boys 1-2 girls	No Maximum	-33kgs
1-2 boys 1-2 girls	No Maximum	-36kgs
1-2 boys 1-2 girls	No Maximum	-39kgs
1-2 boys 1-2 girls	No Maximum	-42kgs
1-2 boys 1-2 girls	No Maximum	-46kgs
1-2 boys 1-2 girls	No Maximum	-50kgs
1-2 boys 1-2 girls	No Maximum	-54kgs
1-2 boys 1-2 girls	No Maximum	Over 54kgs

WEIGHT CATEGORIES

U18 2005 - 2006 - 2007

BLACK BELT Participants	COLOURED BELT Participants	BOYS	GIRLS
1-2 boys 1-2 girls	No Maximum	-45kgs	-42kgs
1-2 boys 1-2 girls	No Maximum	-48kgs	-44kgs
1-2 boys 1-2 girls	No Maximum	-51kgs	-46kgs
1-2 boys 1-2 girls	No Maximum	-55kgs	-49kgs
1-2 boys 1-2 girls	No Maximum	-59kgs	-52kgs
1-2 boys 1-2 girls	No Maximum	-63kgs	-55kgs
1-2 boys 1-2 girls	No Maximum	-68kgs	-59kgs
1-2 boys 1-2 girls	No Maximum	-73kgs	-63kgs
1-2 boys 1-2 girls	No Maximum	-78kgs	-68kgs
1-2 boys 1-2 girls	No Maximum	Over 78kgs	Over 68kgs

2. POOMSAE

Boys

1. Individual Recognised

- Black Belt
- Coloured Belt

2. Team

- Black Belt
- Coloured Belt

Girls

1. Individual Recognised

- Black Belt
- Coloured Belt

2. Team

- Black Belt
- Coloured Belt

Age Category:

U12

2011 - 2012 - 2013

U18

2005 - 2006 - 2007

Mixed

1. Mixed Pair

- Black Belt
- Coloured Belt

To be eligible to participate:

Each athlete must own a colour belt or any poom/dan certificate allowing them to compete.

Athletes competing in Poomsae cannot compete in Freestyle or Kyorugi and vice-versa.

Poomsae participants will be divided into **two (2) divisions** within their age category: **Black Belts & Colour belts (Yellow, Green & Blue, Brown & Red).**

Delegations are composed of:

	U12	U18
Poomsae Black Belt	Boys: 1-6 Maximum Girls: 6 Maximum	Boys: 6 Maximum Girls: 6 Maximum
Poomsae Coloured Belt	Boys: No Maximum Girls: No Maximum	Boys: No Maximum Girls: No Maximum
Coaches	1 to 6 athletes = 1 coach 6 to 12 athletes = 2 coaches (1 coach per 6 athletes)	1 to 6 athletes = 1 coach 6 to 12 athletes = 2 coaches (1 coach per 6 athletes)

Team Competition:

Teams will consist of 3 athletes.

For the **Black Belt Team competition**, delegations are able to enter a maximum of one (1) team per age category, per gender:

one (1) **boys U12**, one (1) **girls U12**, one (1) **boys U18**, and one (1) **girls U18**.

For the **Coloured Belt competition** there is no maximum number of teams that can be entered.

Referees (see page 16)

Referees must be qualified in Poomsae.

*Failure to provide the required number of referees will lead to a fine of 900 Euros, to be paid to the organiser.

3. FREESTYLE

Boys 1. Individual Recognised <ul style="list-style-type: none">◦ Black Belt 1. Team <ul style="list-style-type: none">◦ Black Belt	Girls 1. Individual Recognised <ul style="list-style-type: none">◦ Black Belt 1. Team <ul style="list-style-type: none">◦ Black Belt	Age Category: U12 2011 - 2012 - 2013 U18 2005 - 2006 - 2007
Mixed 1. Mixed Pair <ul style="list-style-type: none">◦ Black Belt		

To be eligible to participate:

Each athlete must own a black belt allowing them to compete. Athletes competing in Freestyle cannot compete in Kyorugi or Poomsae and vice-versa.

Delegations are composed of:

	U12	U18
Poomsae Black Belt	Boys: 6 Maximum Girls: 6 Maximum	Boys: 6 Maximum Girls: 6 Maximum
Coaches	1 to 6 athletes = 1 coach 6 to 12 athletes = 2 coaches (maximum)	1 to 6 athletes = 1 coach 6 to 12 athletes = 2 coaches (maximum)

Team Competition:

Teams will consist of 3 athletes.

For the **Freestyle Team competition**, delegations are able to enter a maximum of one (1) team per age category, per gender:

one (1) **boys U12**, one (1) **girls U12**, one (1) **boys U18**, and one (1) **girls U18**.

Referees (see page 16)

Referees must be qualified in Freestyle.

*Failure to provide the required number of referees will lead to a fine of 900 Euros, to be paid to the organiser.

4. Para Taekwondo

A.KYORUGI K40 SPORT CLASSES

The Para Taekwondo Kyorugi K40 Sport Classes (K44) are for athletes with a physical impairment.

Delegations are composed of:

Boys: 4 athletes maximum

Girls: 4 athletes maximum

Boys <ul style="list-style-type: none">• 1-2 athletes• 1-2 athletes	Weight category 1. -30 kg 3. -40 kg 2. -35 kg 4. +40 kg	Age Category: U12 2011 - 2012 - 2013
Girls <ul style="list-style-type: none">• 1-2 athletes• 1-2 athletes	Weight category 1. -30 kg 3. -40 kg 2. -35 kg 4. +40 kg	
Boys <ul style="list-style-type: none">• 1-2 athletes• 1-2 athletes	Weight category 1. -58 kg 4. -80 kg 2. -63 kg 5. +80 kg 3. -70 kg	Age Category: U18 2005 - 2006 - 2007
Girls <ul style="list-style-type: none">• 1-2 athletes• 1-2 athletes	Weight category 1. -47 kg 4. -65kg 2. -52kg 5. +65kg 3. -57kg	

Para Taekwondo Kyorugi Rules:

The WT Para Taekwondo Competition Rules as of April 29, 2022, will be implemented for the Para Taekwondo competitions of the K40Sport Classes.

Please note that Article 10.5 of the WT Para Taekwondo Competition Rules will be in effect. Athletes that fail the weigh-in shall be disqualified. All athletes are required to be registered in the correct weight division by the end of the registration deadline. Weight divisions will not be changed in the case the athlete does not pass the weigh-in.

Referees (see page 16)

Referees must be qualified in Para Taekwondo Kyorugi.

*Failure to provide the required number of referees will lead to a fine of 900 Euros, to be paid to the organiser.

4. Para Taekwondo

B.POOMSAE P20 SPORT CLASS [P22 (II2)]

The Para Taekwondo Poomsae P20 Sport Class competitions for Intellectually Impaired athletes is recognized by INAS, the international sports federation for para-athletes with intellectual impairment.

Recognized Poomsae (U12- 2011, 2012, 2013 and U18-2006,2007)

Delegations are composed of:

Boys: 2 athletes maximum

Girls: 2 athletes maximum

Boys & Girls • 1-2 athletes	Age Category: U12 2011 - 2012 - 2013 U15 2008 - 2009 - 2010 U18 2005 - 2006 - 2007
Boys & Girls • 1-2 athletes	

Poomsae Rules

The WT Para Taekwondo Poomsae Competition Rules will be implemented for the Para Taekwondo Poomsae competitions of the P20 Sports Classes.

Referees (see page 16)

Referees must be qualified in Para Taekwondo Kyorugi.

*Failure to provide the required number of referees will lead to a fine of 900 Euros, to be paid to the organiser.

METHOD OF COMPETITION

KYORUGI

The competitions in the K40 Sport Classes will be held in a single-elimination tournament system.

The duration of the contest shall be one round of five (5) minutes with a one-minute timeout for each athlete. In the case of a tied score after the completion of the five (5) minute round, a round of one (1) minute will be conducted as the Golden round, after a one (1) minute rest period. No timeout can be taken during the Golden Round.

Each coach will be allowed to call for one (1) one-minute timeout at any time during the one-round contest.

WT Para taekwondo Competition Rules – [Download-PDF](#)

Eligible impairments physical and intellectual impairments and Certification of classification:

Kyorugi - For athletes with physical disabilities (only arms), the National classification will be applied.

POOMSAE

The Poomsae competitions in the P20 Sport Classes at the Championships will be held in a Cut-off system.

Two (2) Poomsae from the designated Compulsory Poomsae shall be randomly drawn for Age Category for each round of the competition.

Article 8.1 of the WT Para Taekwondo Poomsae Competition Rules shall apply to the P20 Poomsae competitions.

”Recognized Poomsae: Individual, Pair and Team competitions up to one hundred and twenty (120) seconds for each Poomsae.”

WT Para taekwondo Poomsae Competition Rules – [Download-PDF](#)

Eligible impairments physical and intellectual impairments and Certification of classification:

Poomsae - For athletes with Downs Syndrome plus a significant impairment as defined by VIRTUS II2 who appear on the VIRTUS International Master list.

EACH DELEGATION SHALL CONSISTS OF:

1. Head of delegation - mandatory
2. Student athlete(s) - mandatory
3. Team official(s)
 - a) Coaches - mandatory
 - b) Referees - mandatory & optional
4. Additional adults - optional

1) HEAD OF THE DELEGATION

There is a mandatory number of one (1) head of the delegation per registering delegation

- HoD shall be the main intermediary between the delegation and the Local Organising Committee, the ISF Technical Commission, and the ISF Delegate.
- They may not combine their role of HoD with that of a coach or any other official role.
- Each delegation is entitled to enter 1 HoD

2) ATHLETES

- Each team will consist of a minimum of 2 athletes and a maximum of 3 athletes
- Athletes must be students attending schools that provide general education.
- Athletes must be enrolled as full-time students at a school in the country which they represent

The following are not eligible to participate:

- The following are not eligible to participate:
- Attendees of vocational schools only attend a school as a complement to their vocational training and are not full-time students with a segment of general education.
- Students enrolled at schools that provide sports training without any general education
- Part-time (e.g. afternoon) sports schools take pupils from a variety of schools for training in one or more sports
- Teams formed as part of clubs, companies, or other institutions

3) TEAM OFFICIALS

a) Coaches

- The presence of a coach is mandatory
- Teams cannot participate in the competition without the presence of a coach.
- Each delegation is required to enter a minimum of one (1) per discipline, with numbers depending on the number of participating athletes.

b) Referees

Each team is required to enter **one (1) mandatory referee** and has the option to enter **one (1) additional referee**. Referees shall be internationally qualified or be in possession of high-level national qualifications which are recommended by the School Entity and approved by the Technical Commission. International referees must have taken the latest international referee refresher course within two years from the date of the event. If athletes are participating in only one (1) discipline, referees should hold a license for that discipline. If athletes are participating in multiple disciplines referees must have a license for all relevant disciplines being competed in.

4) ADDITIONAL ADULTS

The function of each additional adult must be specified during the registration process (interpreter, security personnel, ministry representative, media, etc.). Delegations can register up to 1 additional adult per 10 participants.

#participants		#additional adults
1	10	1
11	20	2
21	30	3
31	40	4
41	50	5
51	60	6
61	70	7
71	80	8
81	90	9
91	100	10
etc	etc	etc

Technical Rules

METHOD OF COMPETITION

Kyorugi:

Individual Recognised

Poomsae:

Individual Recognised

Team (boys/girls)

Mixed Pair

Freestyle:

Individual Recognised

Team (boys/girls)

Mixed Pair

Para Taekwondo Kyorugi

Individual

Para Taekwondo Poomsae

Individual

SYSTEM OF PLAY

Kyorugi

Single Elimination Tournament System (Best of 3 system, based on World Taekwondo Rules 2022)

Poomsae

Cut-off system (World Taekwondo Rules 2022)

Draw

The ISF is responsible for establishing the criteria of the draw.

The ISF Technical Commission is responsible for implementing the draw.

Disciplinary Decisions

EVENT DISCIPLINARY COMMISSION

In accordance with the ISF General Competition Rules, The ISF Event Disciplinary Commission shall deal with all incidents and all violations of the ISF Statutes, Sports Policy, ISF Handbook, Rules, and any other ISF document linked to the ISF events and broadly with misbehaviour not directly related to the sport technical regulation during an ISF event.

The Event Disciplinary Commission is composed of the ISF Delegate, the TC Taekwondo President, and the LOC President.

APPEAL JURY

The Appeal Jury shall deal with all protests of a technical sporting nature during the competition.

The Appeal Jury is composed of the President of the Technical Commission, one member of the Local Organising Committee, and the Head Field of Play Officials.

APPEALS

Please refer to the Appeal section of the ISF Technical Rules and Regulations for the appeal of Taekwondo

Appeals involving results or any matter not concerning discipline will be heard by the Jury Appeal. The appeal must be lodged within 30 minutes of the incident and be submitted in English. The payment of the amount of 50€ must accompany the appeal and is to be paid to LOC in cash. This payment will be refunded only if the appeal is upheld or at the discretion of the Jury Appeal. In the case of an unsuccessful appeal, the payment will be retained by the ISF.

PARTICIPANTS OBLIGATIONS

- Each participant is required to be present throughout the whole duration of the event.
- Each participant is obliged to take part in all the non-sport activities.
- Each team undertakes to compete against all other participating teams.
- The absence of a team, (or any member of a participating team member) from any part of the entire sport, opening, prize-giving and closing ceremonies and socio-cultural programme may result in the team's being excluded from the final results.

ANTI-DOPING

ISF being a Wada code signatory is promoting clean sport as one of the main values applied during its events. Besides the tests that can take place accordingly to the age category and the tradition of relevant sports, ISF in cooperation with WADA is implementing a large educational programme to raise awareness on the danger of doping behaviours.

ERAS REGISTRATION

ISF members

Please note that this section of this bulletin is relevant only for ISF members.

Non-ISF member and DAS willing to participate to the event, please send an interest of participation to the ISF office at both admin@isfsports.org and sport@isfsports.org

HOW TO REGISTER

The only registrations accepted are the one made through ERAS - the ISF registration platform.

- Each ISF member country is entitled to have the credential to access ERAS.
- To access ERAS, please use your ERAS credentials in: [ISF ERAS | ERAS \(isf-eras.org\)](https://isf-eras.org)
- If you forgot your password, you can reset it at: [Password Recovery | ISF ERAS \(isf-eras.org\)](https://isf-eras.org)
- If you encounter any other problems, please contact the ISF secretariat at admin@isfsports.org or the sport department at sport@isfsports.org

The registration process for ISF members is divided in 2 phases:

Phase 1 / deposit payment

December 2, 2022

- April 1, 2023

Phase 1 registration for the Event will be from the **2nd of December 2022** to the **1st of April, 2023**. During registration phase 1 registering delegations shall indicate their intention of participating, the number of teams per category that they wish to enter, and an exact number of participants per team. All ISF members are expected to pay the deposits for their teams or reach an agreement with the ISF (see chapter below) **by April 1, 2023**. The delegation will be able to enter Registration phase 2 after the *deposit has been paid or an agreement with the ISF has been reached but no later than **May 30, 2023**.

Phase 2

April 2, 2023 - May 30, 2023

In registration phase 2, countries are expected to enter the exact detailed information for each participant (name, date of birth, gender, photo, dietary requirements). Furthermore, the delegation will submit their expected date of arrival and departure as well as the type of transport that will be required.

*see more information on the deposit in the "deposit" section below

REGISTRATION DEADLINES SUMMARY

December 2, 2022	Opening of registration phase 1
April 1, 2023	Closing of registration phase 1
April 1, 2023	Payment of deposit
April 2, 2023	Opening of registration phase 2; after payment of deposit
May 30, 2023	Closing of registration phase 2

Financial Conditions

Please note that this section of this bulletin is relevant only for ISF members.

To participate, each ISF member is required to make two (2) payments:

1. Deposit payment
2. Balance fee payment



1. Deposit payment

Along with the entry and in order to have access to registration phase 2, participating ISF members will need to pay a **deposit of 100€ per participant registered in Phase 1.**

Please note that the participation to the event is granted only by the deposit payment. Deadline of deposit payment: **April 1, 2023**

- The sum will be deducted from the total participation cost.
- The deposit must be sent as a single payment for the whole delegation by the organisation responsible for school sport (federation, trust, ministry...).
- The deposit is non-refundable in the event of non-participation. Waivers to the payment of the deposit, for whatever reasons, are to be discussed with the ISF office and to be agreed upon before the deposit payment deadlines.

The deposit for the registered teams per category shall be paid by **April 1, 2023 (23:59 CET)**. If the deposit is not paid within the given deadline, the registrations will not be considered valid and will be automatically deleted from ERAS.

Deposit shall be paid by bank transfer to the ISF to the following account (all bank charges are to be met by the participating country):

Name of the Bank: **BNP PARIBAS FORTIS**

Address of the bank: **Rond-point Robert Schuman 10, 1040 Bruxelles, Belgium**

BIC/Swift Code: **GEBABEBB**

IBAN: **BE 03 0015 2130 7984**

Payee/holder: **International School Sport Federation,
59 Rue Archimede, 1000 Brussels, Belgium**

Reference: **WSC Taekwondo 2023 – Deposit – [name of the country]**



2. Balance fee payment

The balance fee payment is the participation fee minus the deposit which has already been paid.

The balance fee payment is to be paid before the start of the event to the LOC account (all bank charges are to be met by the participating country).

Participation fee

The participation fee covers full board accommodation for the duration of the event plus competition, cultural programme activities and all local transport from the arrival to the official port of entry to the departure of the team.

The participation fee is composed of:

1. Rates by night: minimum 60€/night/delegation member
2. ISF levy:
 - 40€ per person for ISF member
 - 100€ per person for non ISF member and DAS

RATES BY NIGHT

Head of Delegation	Single occupancy	60€
Coach	Double occupancy	60€
Coach	Single occupancy	120€
Athlete	2-4 bedded rooms	60€
Additional adult	Double occupancy	60€
Additional adult	Single occupancy	120€
Other Team official	Double occupancy	60€
Other Team official	Single occupancy	120€
Field of Play official	Double occupancy	60€
Field of Play official	Single occupancy	120€

The table below shows an overview of the minimum participation fee per participant.

No. Nights	x	Rate by night (min)	+	ISF levy	=	Total (minimum/participant)
7		60€		40€		460€

CHARITY GALA DINNER

A charity gala dinner is organised during the event. All Heads of Delegation are expected to take part in the dinner. The gala dinner fee is 50€/person, to be paid together with the final balance. More information on the Gala dinner will be given in Bulletin 2. The participation to the gala dinner will be declared over the registration process Phase 3.

The balance fee payment is to be paid before the start of the event to the following **LOC account** (all bank charges are to be met by the participating country).

Name of the Bank: **BBVA**

Account Number: **011 559 1708**

Account CLABE: **012 650 001155911708 7**

Address of the bank: **Teziutlán Sur 45, La Paz, 72160 Puebla, Pue. MÉXICO**

BIC/Swift Code: **BCMRMXMMPYM**

Payee/holder: **FEDERACIÓN MEXICANA DE DEPORTE ESCOLAR**

Reference: **WSC Taekwondo 2023 – Deposit – [name of the country]**

PAYMENTS DEADLINES SUMMARY

April 1, 2023 (23:59 CET)	Deposit payment
May 30, 2023 (23:59 CET)	Balance payment



@ISFsports



@ISFsports



@ISFsports



/ISF



/ISFsports

