



INTERNATIONAL
SCHOOL SPORT
FEDERATION



REPUBLIC OF KENYA
MINISTRY OF EDUCATION

BULLETIN 2

ISF WORLD SCHOOL CROSS COUNTRY CHAMPIONSHIP 2024

NAIROBI, KENYA
10-14 MAY 2024



ISF WORLD SCHOOL
CROSS COUNTRY
CHAMPIONSHIP
NAIROBI, KENYA 2024



TABLE OF CONTENT

Bulletin 2 contains updated information that are not shown in Bulletin 1
For other information please refer to Bulletin 1

1

EVENT MANAGEMENT AND PROGRAM

2

REGISTRATION OVERVIEW

3

FAMILY AND FRIENDS

4

ACCOMMODATION

5-6

VENUES

**TRANSPORTATION
CULTURAL DAY**

8

7

SPORT

- Technical rules
- Official draw

**NATIONS NIGHT
CEREMONIES**

9

ISF ACADEMY

10

REGISTRATION

11

FINANCIAL CONDITIONS

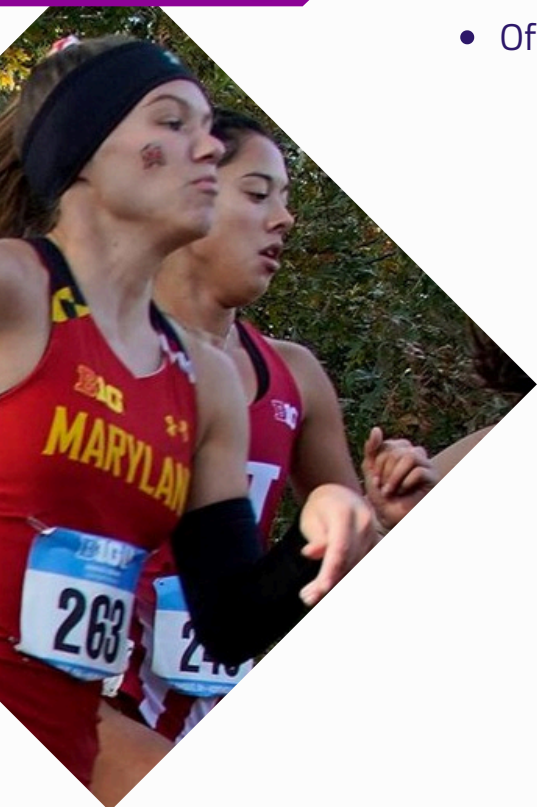
12 - 13

ADDITIONAL INFORMATION

14

COMMUNICATION

15



EVENT MANAGEMENT



EVENT MANAGEMENT



International School Sport Federation (ISF)

Office - admin@isfsports.org

Sport department - sport@isfsports.org

Communication department - communication@isfsports.org



Local Organising Committee

Organisation - Kenya Secondary Schools Sports Association

Contact - info@isf-kenya.ke

PROVISIONAL PROGRAMME

May 9	May 10	May 11	May 12	May 13	May 14
Arrival Optional Accreditation	Arrival Mandatory Accreditation	Trainings Meetings Opening Ceremony	Competition Awarding ceremony ISF Academy Safeguarding Anti-doping	Cultural Day Friendship Relay Nations Night	Departure

REGISTRATION OVERVIEW



	Delegation	Participans
1	AEFE Kenya	20
2	Chile	31
3	China	7
4	Croatia	14
5	Czech Republic	15
6	England	25
7	Ireland	12
8	Italy	16
9	Kenya	63
10	Luxembourg	15
11	Mexico	18
12	Morocco	26
13	Namibia	11
14	New Zealand	30
15	Nigeria	8
16	Qatar	31
17	Rwanda	11
18	Saudi Arabia	11
20	Tanzania	33
21	Türkiye	15
22	Uganda	48
	TOTAL	460

FAMILY AND FRIENDS



REGISTRATION FOR THE FAMILY AND FRIENDS IS NOW OPEN!



Family and friends of the participants now can register via official ISF platform [ERAS](#) and get exclusive access to all venues!

Registration fee of **150€** guarantees accreditation that gives the possibility of entering the venue and other places of the event. There will not be individual tickets sales for the race.

Accreditation fee is for the adults only. Children below 18 years of age have free access in company with parents.

For the hotels and transportation with local agency, family and friends can benefit from special discounts.

Please contact LOC: info@isf-kenya.ke

ACCOMODATION

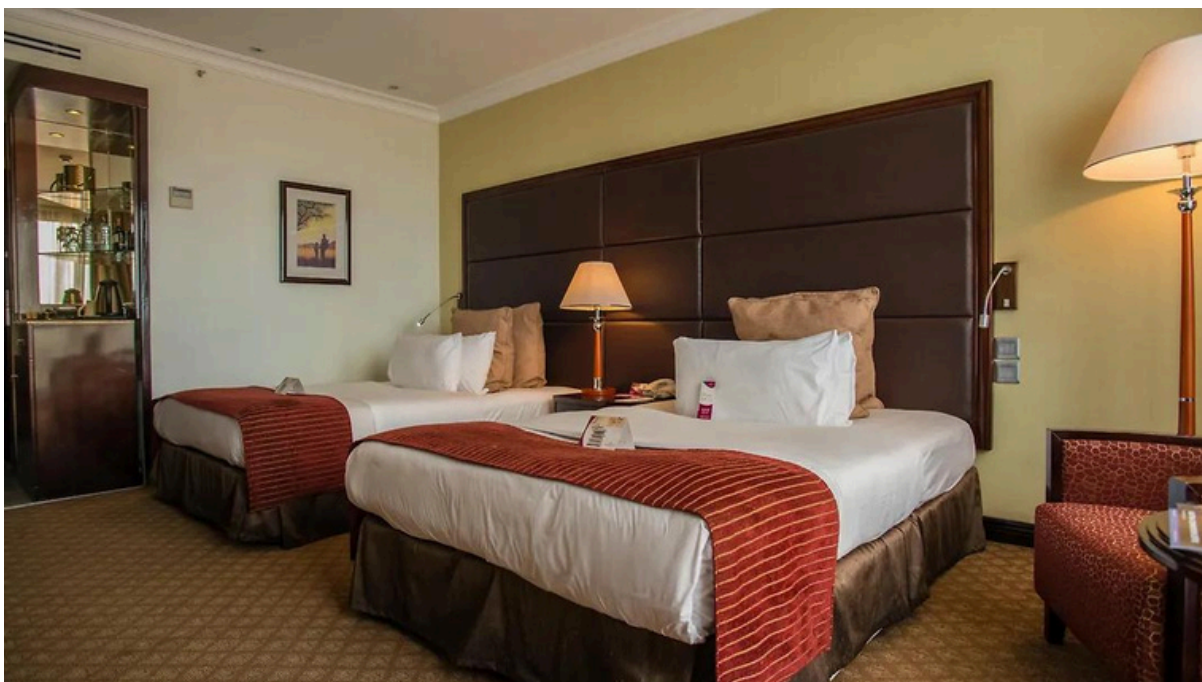


HOTELS

Main hotel for the participants will be ibis Styles Nairobi Westlands and the second one Mercure Nairobi Upper Hill.



[ibis Styles Nairobi Westlands](#)



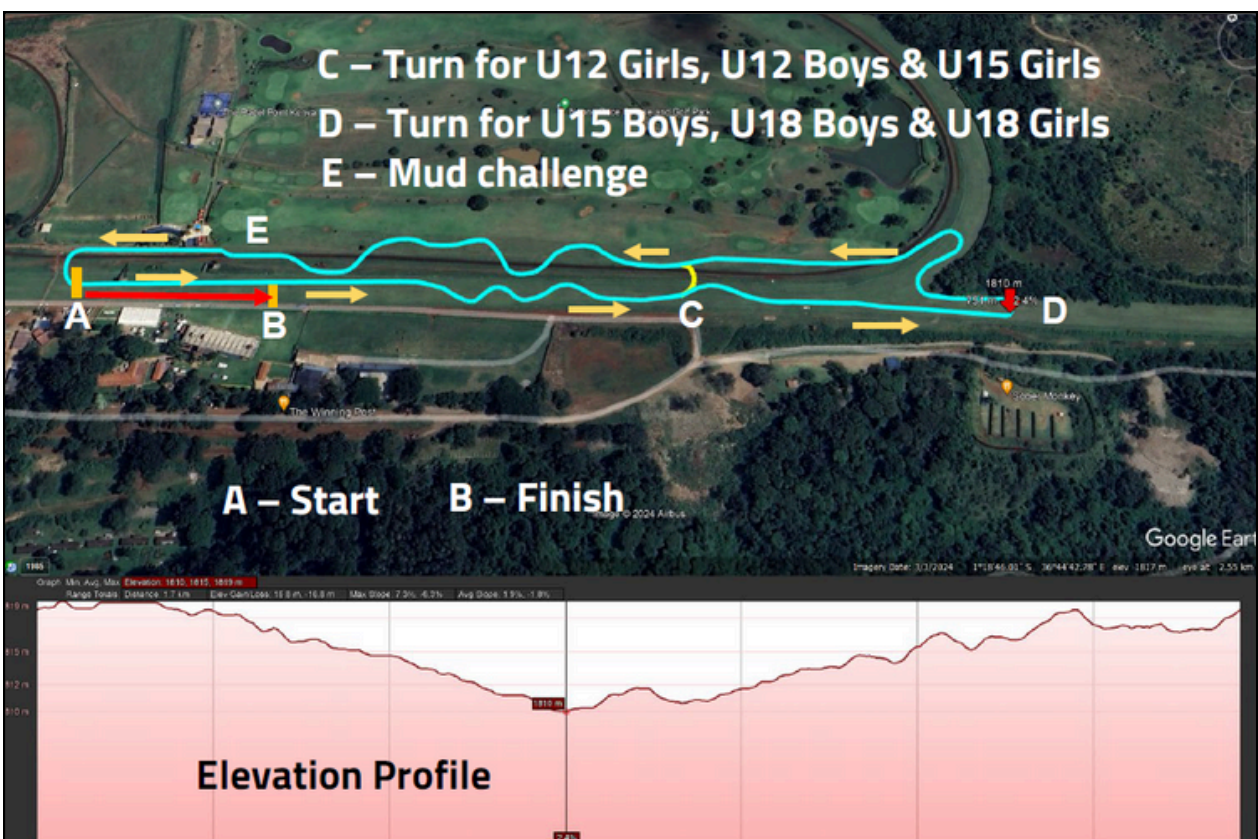
[Mercure Nairobi Upper Hill](#)

VENUE



Ngong Race Course

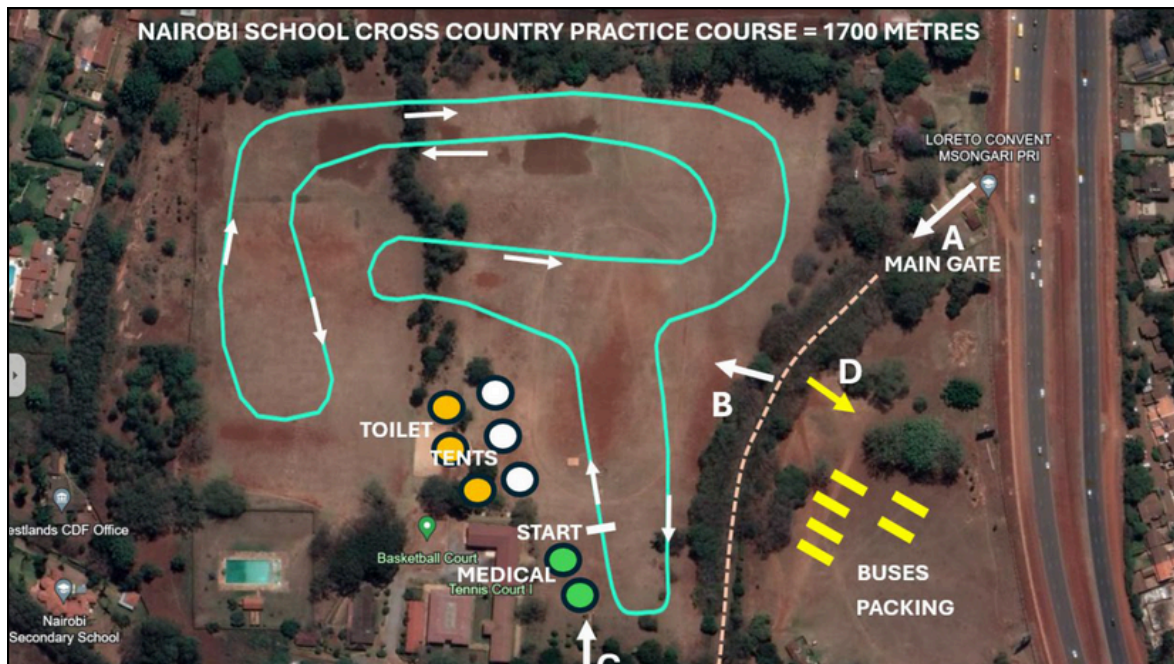
This is a venue that has been used to host multiple National Cross Country championships and other sporting activities such as horse racing. It is located within the famous Ngong forest, the course is well designed with provisions of natural obstacles which are suitable for cross country race.



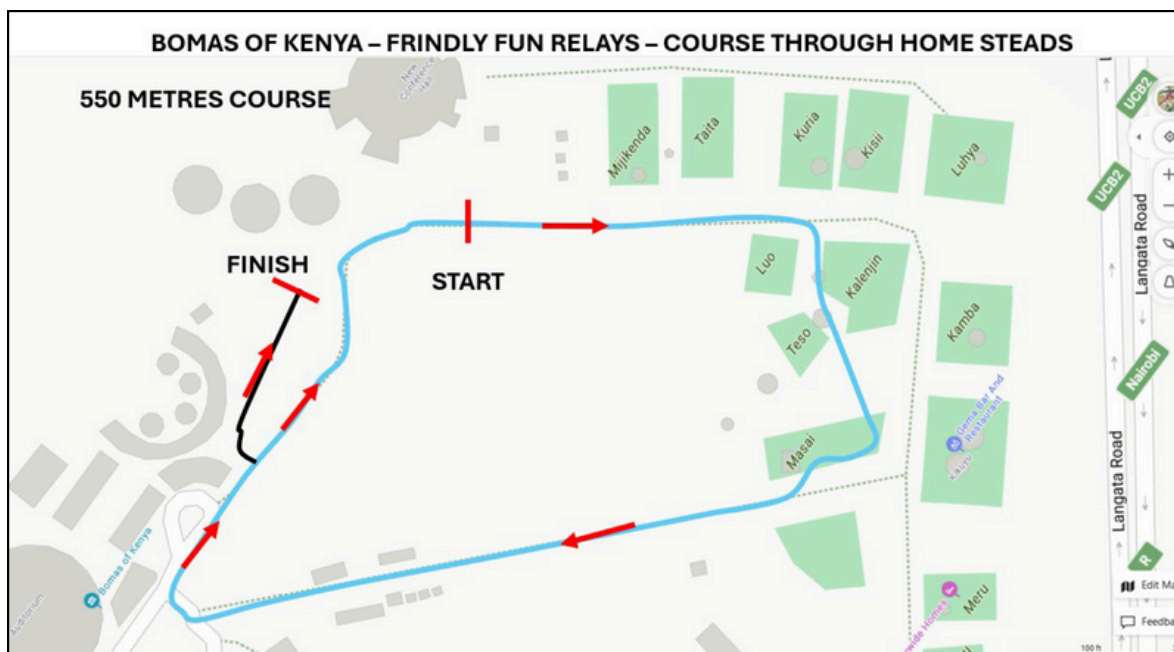
VENUE



Training



Friendship Relay



TECHNICAL RULES



The detailed rules and regulations for the competition [LINK](#)



LIVE STREAM

Follow official live-streaming of the event on [ISF TV](#)

ISF TV [HOME](#) [GYMNASIADES](#) [SCHOOL SPORT EVENTS](#) [SHE RUNS](#) [SPONSORS](#)

UPCOMING

12 - 18 Apr 24

ISF WORLD CUP

FOOTBALL



TRANSPORTATION



- There will be schedule bus service according to the sport program and other non sport activities.
- A designated board will be placed at the hotel where all information will be published daily.
- Bus services will be used for various purposes, including transportation to training and competition venues, arrivals and departures, as well as for attending the opening and closing ceremonies. Additionally, it will be available for cultural and educational activities.

CULTURAL DAY

- The Cultural day will be done on 13th of May
- There will be schedule visit of all participants to beautiful National Park of Nairobi
- The visit will be followed by tourist guides.
- Transport and groups will be published in lobby of hotels before the activity day.



NATIONS NIGHT



The Nations' Night promotes cultural exchanges between participating countries and regions by offering each delegation the opportunity to have a stand where it can present itself in a spirit of fairness. Delegations are free to bring whatever material they need to showcase their culture on their stand.

Nations night will be organize in Bomas cultural centar on 13th of May.

<https://www.bomasofkenya.co.ke/>



CEREMONIES

Opening ceremony will take place in Bomas cultural centar on **11th of May**.





SAFEGUARDING CHILDREN IN SPORT & ANTIDOPING WORKSHOPS

As well as various webinars taking place several days before the event to support the Head of Delegation and Coaches in preparing their mission within an ISF event (these online educational & capacity building activities are compulsory to attend for all the following adults' stakeholders taking part in ISF events), the ISF's promotion of school sport by the ISF Academy through its international events also involves the transmission of knowledge through workshops on two themes that are dear to us all: **Safeguarding Children in Sport** and **Doping Prevention in Sport**. ISF firmly believes that children have and must have the necessary inner resources, through these workshops, to understand, identify and react to negative behaviour such as racism, gender inequality or violence and abuse. The challenge for ISF is to find the right way to express difficult ideas and present complicated topics to young people so that they understand, but also so that they correctly apprehend this problem and are able to react to it.

Raising awareness and enabling participants to transfer their knowledge to their peers back home are also key elements of ISF. During this event, athletes from all over the world will attend several workshops sessions given by experts in the field, passing on their knowledge and experience through dedicated, constructive and interactive pedagogy.

Safeguarding and Anti-doping seminars will be organize on **12th of May** in the afternoon hours.



REGISTRATION



COLLECTING DATA AND INFORMATION

Second phase of registration is now open!

Delegations are expected to enter the exact detailed information :

- Final detailed information for each participant (photo, dietary requirements, personal bests, jersey number)
- Submitting the expected travel plan (time, date, flight info)
- Rooming list
- Payment overview
- School Certificate
- Consent forms
- Insurance

DEADLINE

03.05.2024

REGISTRATION



▶▶▶▶▶▶▶▶▶▶ BALANCE FEE PAYMENT

Balance fee payment = Participation fee - Deposit (*already paid*)

The balance fee payment is to be paid before the start of the event to the LOC account (all bank charges are to be met by the participating delegation).

Participation fee

The participation fee covers full board accommodation for the duration of the event plus competition, cultural programme activities and all local transport from the arrival to the official port of entry to the departure of the team.

The participation fee is composed of:

1. **Rates by night:** minimum 60€/night/delegation member
2. **ISF levy:**
 - 100€ per person (ISF members)
 - 150€ per person (non-ISF members)

▶▶▶▶▶▶▶▶▶▶ RATE BY NIGHT

Head of Delegation	Single occupancy	60€
Coach	Double occupancy	60€
Coach	Single occupancy	120€
Athlete	2-4 bedded rooms	60€
Additional adult	Double occupancy	60€
Additional adult	Single occupancy	120€
Other Team official	Double occupancy	60€
Other Team official	Single occupancy	120€
Field of Play official	Double occupancy	60€
Field of Play official	Single occupancy	120€

Remaining roles follow the same format as the Additional Adults, Other Team Officials, and Field of Play Officials*

FINANCIAL CONDITIONS



The table below shows an overview of the minimum participation fee per participant.

No. Nights	x	Rate by night	+	ISF levy	=	TOTAL <i>(minimum/participant)</i>
4		60€		100€/150€		340€/390€

The balance fee payment is to be paid before the start of the event to the following LOC account (all bank charges are to be met by the participating country).

Payment in cash on spot is possible. If your delegation is paying in cash, please announce it to the LOC.

Name of the Bank: National Bank of Kenya
Branch: Ngong Road
Branch code: 061
Bank code: 012
SWIFT: NBKEKNXXX
Account Number: 7716693883
Payee/holder: ISF World Cross Country
Reference: ISF FWC 2024 – Final balance – [name of the country/region]



CHARITY GALA DINNER

A charity gala dinner is organised during the event. All Heads of Delegation are expected to take part in the dinner. The gala dinner fee is **50€/person**, to be paid together with the final balance.

Detail plan of the Gala dinner will be communicated in the Handbook of the Event 7 days before the Event.

ADDITIONAL INFORMATION



GOOD TO KNOW

KENYA TRAVEL ADAPTORS

You will need to consider what to pack, to ensure you can use your personal electrical appliances safely whilst abroad. This normally includes the use of a travel adaptor, which is a device that simply allows you to plug any electrical appliance into a foreign electrical socket. It is important to note that it does not convert the voltage or frequency.

For Kenya the associated plug type is G, which is the plug that has three rectangular pins in a triangular pattern. Kenya operates on a 240V supply voltage and 50Hz.



KENYAN SHILLING

The currency in Kenya is the Kenyan shilling. Each shilling is divided into 100 cents. When you're buying currency for Kenya, look out for the currency code KES. And once you're in Kenya, you'll see the symbol KSh used to show prices.

Amount From To

100.00 Euros =

14,398.425 Kenyan Shillings

1 EUR = 143.984 KES

1 KES = 0.00694520 EUR

COMMUNICATION



Get in touch with us !

Show us how your country and teams are getting ready for the event and send us your teams pictures, preparation and training videos.

Don't forget to tag and follow us on our social media accounts and use the hashtag of the event :

#WSSCCrossCountryKenya2024

Additional content created by your Federation or your school athletes and students can be sent to communication@isfsports.org

Communication channels

Website : www.isfsports.org

ISF TV : tv.isfsports.org

Social medias :

 Instagram : [@isfsports](https://www.instagram.com/isfsports)

 Facebook : [@isfsports](https://www.facebook.com/isfsports)

 Twitter : [@ISFsports](https://twitter.com/ISFsports)

 Tiktok : [@isf_sports](https://www.tiktok.com/@isf_sports)

 Youtube : [@isfsports](https://www.youtube.com/isfsports)

 LinkedIn : [@international-school-sport-federation/](https://www.linkedin.com/company/international-school-sport-federation/)

Contact: communication@isfsports.org



REPUBLIC OF KENYA
MINISTRY OF EDUCATION



INTERNATIONAL
SCHOOL SPORT
FEDERATION

SEE YOU IN
NAIROBI

